



# ANNUAL REPORT

AUCKLAND WAR MEMORIAL MUSEUM

2005 | 2006

# CONTENTS

## Annual Report

2005 | 2006

Performance at a glance	1
Chairman's Report	2
Auckland Museum Trust Board	4
Director's Report	6
Taumata-a-Iwi Report	8
Taumata-a-Iwi Kaupapa	10
Statement of Service Performance	12
Collections Management	22
Collections Centred	24
Public Programmes	32
Finance and Facilities	38
Maori Values	40
Human Resources	44
Our Organisation	45
Financial Statements	47
Museum Staff	66
Museum Volunteers	68
Museum Medal Recipients	70
Institute Council and Museum Circle	71
Staff Publications	72



Auckland War Memorial Museum

Tamaki Paenga Hira

Whakamana

Nga taonga tukuna iho

Hei whakataki i nga ra ki muri

Honouring the past

Embracing the present

Guiding our future

## VISION

To be a source of inspiration to our communities

## MISSION

Collect and care for our communities' treasures in order to tell object-based stories in a way that stimulates mind and spirit

## VALUES

Distinguished

Caring

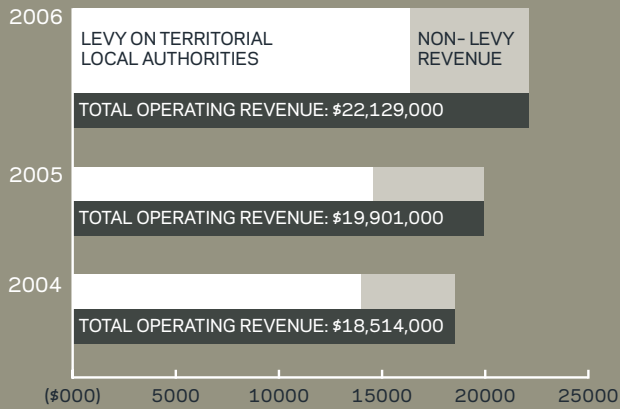
Welcoming

Encouraging

Involving

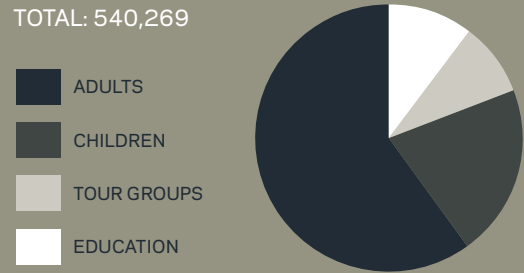
# PERFORMANCE AT A GLANCE

## Operating Revenue



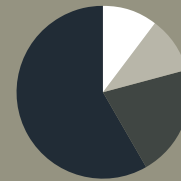
## Visitors 2006

TOTAL: 540,269



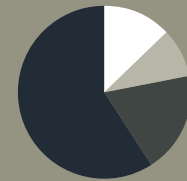
## Visitors 2005

TOTAL: 459,536

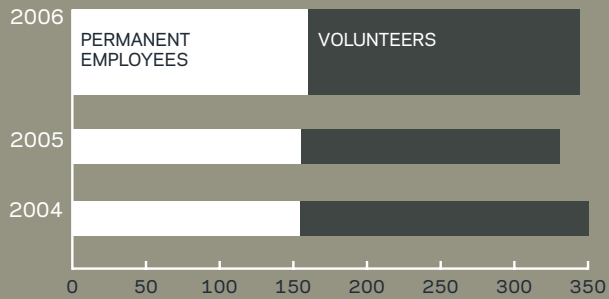


## Visitors 2004

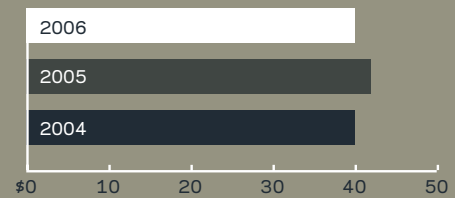
TOTAL: 447,215



## Staff



## Cost per Visitor



## CHAIRMAN'S REPORT

Good years, like good wine, are a combination of skill, planning, execution and plain good luck, put the past year into that vintage.

In May the ASB Community Trust announced a further grant of \$2,500,000 to the Museum's Stage II building project. This was momentous for two reasons. Firstly, it brought their total contribution to the redevelopment of our Museum to \$12,900,000. A truly magnificent gesture. Secondly, this final grant brought the year's fundraising achievement to a total of \$4,000,000, completing the entire fundraising campaign of \$64,600,000.

Fundraising for a project as large and complex as the Grand Atrium is a long and hard process. In fact the Museum has been actively raising capital funds for the Stage I, and Stage II projects for the past twelve years. It is, therefore, with considerable satisfaction, and not a little relief, that I am able to report the conclusion of this capital campaign. On behalf of my Board I want to publicly thank all our funders for their generosity; immense as it is, irrespective of amount. It is they who have made of our dream the reality of restoration and redevelopment – although it is the staff who have steadfastly borne the brunt of that constructed reality.

Another Open Day was held in November to give visitors a chance to view the Project in development. Just as last year, this opportunity to preview an intriguing building development was eagerly snapped up by Aucklanders. Just before Christmas, the Museum's two-level underground car park, immediately behind the south end of the Museum, was opened. Unfortunately, direct undercover access into the Museum is not available until December when the Grand Atrium itself will open. Nevertheless it has been a welcome relief to the problem of parking in the Domain for many of our visitors.

In retrospect I am pleased to report a very commendable year's performance against the Key Outcomes published in the Museum's Annual Plan for the year. The Plan was presented in a new format in 2005 / 2006, separating those outcomes sought in implementation of the Board's responsibility to "Manage and Maintain" the Museum, from those required to "Develop" it. In both areas the measures have generally been achieved, and often they have been exceeded. This is especially satisfying when the disruptive influence of a major building project is taken into consideration.

It has been a notable year on many fronts, with an active programme, excellent attendance results for The da Vinci Machines exhibition over summer, the opening of the new Volcanoes permanent exhibition sponsored with a major grant from EQC, the Earthquake Commission, a new look MQ membership and information magazine, and the celebration of seventy five years of publication of the Museum's scholarly journal, Records. In our game, participation and reach is everything, and we have excelled this year.

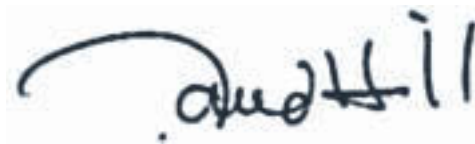
Notable among the staff's many achievements were the award to Ewen Cameron, the Museum's Curator of Botany, of the Loder Cup for 2005 by the Minister of Conservation, in recognition of his exemplary work over a long period of time on New Zealand native plants; and the award to Professor Roger Neich, Curator of Ethnology, of the Monu Daula or Frigate Bird Award by the Peabody Essex Museum in Salem, Massachusetts, for his long standing work in New Zealand and abroad in Maori and Pacific Ethnology. These are both major awards, and the Trust Board is proud to be able to congratulate these distinguished staff on gaining their peers' recognition and acknowledgement.

The War Memorial role of the Museum has been further strengthened. Museum staff have increased their involvement in, and support of, the two ANZAC Day services (traditionally the responsibility of the RSA and Auckland City Council), and the Armistice Day symposium was continued again this year with capacity participation. Two smaller exhibitions; Hiroshima Nagasaki A-Bomb and Lt. Cmndr. Karl Woodhead's photography in Peace in Afghanistan were mounted. The intriguing exhibition honouring Auckland's 21st Infantry Battalion, Veterans' Club, was a special visitor pleaser.

The 21st Battalion Association had taken the decision a year earlier to wind up its activities, and close its Mt Roskill clubrooms. Veterans' Club was an exhibition which reconstructed those clubrooms in the Museum's Pictorial Gallery, presenting a lively mix of Battalion memorabilia, photographs and Kiwiana, which gave a rare glimpse into the place of pride, companionship and memory for the veterans of the 21st Battalion.

On the support side I would like to thank the late John Horrocks, his daughter Lyndy Sainsbury and Lyndy's husband, Mark, for their generous naming sponsorship of the Pictorial Gallery. On the closing night of Veterans' Club, a simple ceremony was held naming that gallery the 'Sainsbury-Horrocks Gallery', a fitting memory for John Horrocks and a tribute to Lyndy Sainsbury's considerable efforts in support of the Museum's fundraising campaign.

Finally, in conclusion, I wish to acknowledge the Board's gratitude for the enthusiasm and, at times, long suffering of the staff, volunteers, their friends and relations who have worked through the difficulties of construction over the past years and are now within sight of an integrated, first world, 21st Century, Museum. All those for whom this institution was conceived, constructed and dedicated, and those who hold the memory of this place so dear, thank you. If the proof is in the eating, join us for the opening festivities in December.



DAVID HILL  
CHAIRMAN

# AUCKLAND MUSEUM TRUST BOARD

## Board Member Biographies



DAVID  
HILL

David Hill has post-graduate qualifications in anthropology and planning, and has been professionally involved with heritage, historic and environmental planning issues in New Zealand and overseas since 1980, including private and public sector institutional reform. David has extensive ties with the Pacific where he has developed environmental and resource management law. Past chairman of the Auckland Conservation Board (1996 - 2000), he has also been a Director at Hill, Young and Cooper Ltd - resource management consultancy since 1995.



JOHN  
DUDER

John (BE, FIPENZ, AMICE), is a consulting civil engineer with over 45 years experience in consulting in New Zealand and overseas. He was a trustee of the Spirit of Adventure for over 30 years and is now on the inaugural board of the Tucker Thompson sail training Trust. He has been a Director of Tonkin & Taylor Ltd and of Water Care Services and was on the Dental Council disputes tribunal. He is deputy chair of the Devonport Community Board.



TIMOTHY  
HANNAH

Timothy is an economist and former Foreign Affairs and Trade official. He has represented New Zealand widely overseas and served as Executive Director of the APEC Secretariat. He is trained in public/private sector management and company directing (IOD). Since retirement he has assisted with the governance and structural review of the Auckland Philharmonia and development of ASEAN/NZ business relations, and is also Associate Chair of Malay Studies at Victoria University.



JUDITH MCKAY

Judith McKay is GM - Finance & Resources at AUT. She has degrees in economics and commerce and is a Chartered Accountant. Judith has been with AUT since 1994 where she has responsibility for the financial and property portfolios of the University. Judith previously held various senior finance and administration roles for a trans-Tasman shipping company and several manufacturing companies. She has been an auditor at Price Waterhouse and a COBOL programmer. Judith has a keen interest in sports administration and is a Board member of the NZ Academy of Sport.



SIR HUGH KAWHARU

Sir High Kawharu (1927-2006) Professor Sir Hugh Kawharu was Chair of the Ngati Whatua o Orakei Maori Trust Board and an Emeritus Professor of the University of Auckland. Holding an MA (Cambridge) and a DPhil (Oxford), Sir Hugh had an outstanding record of service as an academic and as a leader of Maori and Pakeha people alike. He has been involved with a wide variety of academic and professional organisations. In 2002 Sir Hugh was made a member of the Order of New Zealand and in 2005 received Auckland City's Distinguished Citizen Award.



JENNIFER LAMM

Jennifer Lamm is a solicitor currently with the Auckland District Area Health Board. In the past she has worked with ASH, NZ Guardian Trust Company, Jackson Russell, the Auckland Museum Library, in the Australian computer industry and at the Universities of Auckland and Bath. A Life Member of the Auckland Museum Institute, she is also a member of the Historic Places Trust, the Auckland Civic Trust and the Antarctic Society. Jennifer has a special interest in the law relating to the international trade in cultural property and historic place legislation and compliance.



DALE BAILEY

Dale is a senior review officer for the ERO. He has a Masters in geography and is a registered teacher. Extensively involved in curriculum and resource development in secondary social studies, he is completing a Masters in public management. Dale has been widely involved in heritage governance in heritage and arts organisations and was the founding chairperson of the Te Manawa Museums Trust. Dale is an honorary life member of the NZ Historic Places Trust, and in 1994 was awarded a Nuffield Commonwealth fellowship to the Commonwealth Institute in London.



WILLIAM RANDALL

William has Masters and PhD degrees in biology as well as an MBA in business/finance. William has spent 15 years in banking and finance where he managed the treasury function for a large U.S. investment company (Fidelity Investments) and was the managing director of New Zealand stockbroking company ANZ Securities NZ Limited. Currently a director of Capstone Partners, William's primary interest lies in helping the country to develop its biotechnological capabilities in science.



BARRY TURLEY

Barry Turley is a Chartered Accountant (retired). For many years he held senior managerial roles within the industrial groups of Feltex NZ Limited. In 1996 he retired as CEO of Transportation Auckland Corporation Ltd (Yellow Bus Company). He was a member of the Divestment Unit established to prepare a plan on the Auckland Regional Services Trust's sale of interests in Transportation Auckland Corporation. Barry is a past-Chairman of the Trust Board (1997 - 1999) and currently chairs the Project committee responsible for the Stage II Grand Atrium development.



BRUCE ANDERSON

Bruce's background is in the public sector where he was a leader in the development of local government strategic management and customer service initiatives. He held the position of Chief Executive of Auckland City Council for 13 years. Before that as a professional and chartered engineer, he had a wide range of project engineering, contracts engineering and design engineering experience. Bruce is a past-Chairman of the Trust Board (1999 - 2003) and currently chairs its Annual Plan committee.

## DIRECTOR'S REPORT

For the second year, construction activity on the Grand Atrium project has dominated life at the Museum, although, fortunately, this has had little adverse impact on our visitors.

The underground car park was opened in December and enormous progress has been made on the atrium itself. At the closing of the financial year, the dome which covers the atrium was on, clad in copper, and the perimeter glazed.

Beneath it, the suspended bowl-shaped building was in place, and in the process of being clad with lapped Fijian kauri weatherboards. Its interiors were also well advanced in fit-out. Adjoining areas were advancing well. The lowest basement floor was completed ready for the installation of collection storage furniture, and the upper basement was completed and already in use as temporary offices for construction personnel. The complex truck dock facilities, excavated under the east wing of the existing building, were also advancing satisfactorily.

Out at the Museum's off-site interim collection storage depot, excellent progress has been made by the Museum Registrar, Laura Vodanovich and her team. Some 2500m<sup>3</sup> of collection is nearly all packed and ready for the delicate move into the new basement storage area once Project work permits. Conservation staff have moved to a temporary laboratory and are soon to move back into their extended and improved new laboratory.

The *Volcanoes* exhibition opened on December 17, replacing the former Human Impacts gallery. Generously sponsored by EQC, and curated by Dr Hamish Campbell, this exhibition is the newest addition to the Museum's five-gallery suite of Natural History galleries. It tells the story of New Zealand's volcanic history, our place in the geological life of our planet, and looks at the consequences of a new outburst in this volcanic city in which we live. It is a fine gallery, and great tribute to Dr Campbell, Gallery Renewal Manager, Malcolm Ryan, and the team who assisted and supported the exhibition's development.

The Gallery Renewal Programme also saw the closing of City Gallery, the exhibition on Auckland by Professor James Belich. Sadly, the much-loved garage/workshop with the old Morrie Minor car has gone. A new exhibition on Auckland will be developed in 2007, but in the meantime the former City gallery has been refitted for a permanent exhibition



on *New Zealand Design and Decorative Arts*. It, and its corresponding *International Design and Decorative Arts* gallery, will open later this year, just before the Stage II Grand Atrium opening in December.

The stand-out success in visitor attendances was *The da Vinci Machines*, which ran over the summer period. But it was a successful year for other exhibitions as well. Tumuaki Maori, Dr Paul Tapsell's *Ko Tawa: taonga from our ancestral landscapes*, (objects from the Captain Gilbert Mair collection), was very well received in Auckland and has gone on to tour to Porirua, Whangarei and the Australian Museum in Sydney.

Peter Shand, guest-curated *Zambesi: edge of darkness*, celebrating the fashion design of Elisabeth and Neville Findlay. *Given: Jewellery by Warwick Freeman* returned from Amsterdam and was shown from July to September. And *Veterans' Club*, as the Chairman has remarked, was a wonderful fusion of Kiwiana, war memorabilia and recognition of the veterans of our own Auckland 21 Battalion.

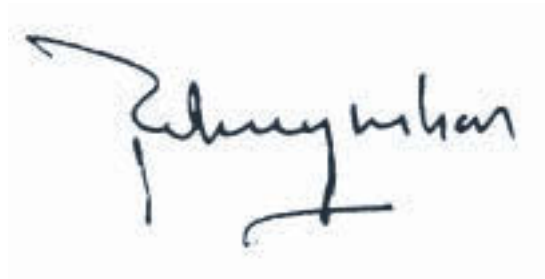
Musical Matariki marked the Museum's growing activity in the Matariki mid year celebrations. It was a great credit to our Maori Values Team and was themed, this year, to feature taonga puoro, or traditional Maori musical instruments.

Perhaps the most intriguing acquisition for the year was the 1.3 kilogram, 4,600 million year old meteorite which plummeted through an Ellerslie house roof in June 2004. It was to be the end of a long journey from the Asteroid Belt between the orbits of Mars and Jupiter, and had it arrived moments earlier it would have had unfortunate consequences for one of the homeowners who was sitting on the sofa in which it embedded itself. It is the ninth meteorite to be found in New Zealand and the only one to hit a home!

The fifth goal in the Museum's Ten Year and Annual Plans is to have a 'Leading Team'. The Chairman has commented on the prestigious recognition two of our Curators have received. But those curators would be the first to acknowledge other noteworthy achievements by a number of other staff. New Human Resources processes have been introduced to help staff plan better their activities and the growth of their own

professional capability, and the Trust Board increased by almost 100% the budget for Staff Training and Development.

With twelve years of building redevelopment and extension almost behind us, and with funding now at an adequate and sustainable level, the focus must now move to our "Leading Team". It is from here that the impetus to grow the Museum's activities and services, and to continue to pursue excellence in all it does, will come. I want to thank the Trust Board, our staff, our Taumata and our 200-strong band of loyal volunteers, for a very successful year.



DR T L RODNEY WILSON  
DIRECTOR

# TAUMATA-A-IWI REPORT

E nga mana, e nga reo, e nga kararangaranga maha, tena koutou katoa. E nga tini mate o te waa, haere, haere, haere atu ra. No reira, ratou nga mate kia ratou, tatou te hunga ora ki a tatou, aa, tena tatou katoa.

To our authorities, orators and respected leaders from various callings, greetings to you all. To our many loved ones who have passed on, we remember you. And to we, the living descendants, greetings to you all.

The year past has cemented the special relationship between Auckland Museum Trust Board and its legislated Maori Advisory Committee Taumata-a-Iwi. *Honouring the past, embracing the present, guiding our future* has provided the visionary foundation to this relationship, triply reflected in the special Grand Atrium windows presented by Ngati Whatua o Orakei, Ngati Paoa and Tainui - the three Auckland Isthmus tribes responsible for ensuring all descendants have direct access to their ancestral representations or taonga held in the Museum.

In no small way the Trust Board-Taumata relationship has been achieved by the growing commitment of all iwi to support Tamaki Paenga Hira/Auckland War Memorial Museum because of its promise to reach out to its source communities. The catalyst for this relational watershed is both the currently touring *Ko Tawa* exhibition, including its associated publication and web-accessible taonga database; and the mid-way completed Ancestral Human Remains Repatriation Project, which is healing century-old pain and despair.

It gives us great pleasure to see the Maori Values Team with its specialist staff in Exhibitions, Collections, Education, Public Programmes, Security, Corporate, Library and Te Kakano Resource Centre enhance the Museum's Maori community outreach. Collectively they have elevated the Museum's outstanding international indigenous profile, facilitating wider national cross-cultural understanding of ethnic issues and built never-before experienced mutual respect and trust for which all the people of Auckland can take pride.

In closing, we acknowledge the descendants of our loved ones have passed through the veil into the spiritual realm.

Kati ake nga mihi ki a tatou nga morehu a ratou kua mene atu ki tua i te arai, ratou hoki i waihotia a o ratou wairua tapu ma matou hei tiaki. Tena tatou katoa.

E nga mana, e nga reo, e nga kararanga maha, tena koutou katoa. E nga tini mate o te waa, haere, haere, haere atu ra. No reira, ratou nga mate kia ratou, tatou te hunga ora ki a tatou, aa, tena tatou katoa.

Ma nga wairua tapu ma matou hei tiaki. Tena tatou katoa.

Naku iti noa

A handwritten signature in black ink, appearing to read 'Te Puna'.

TE PUNA (DANNY) TUMAHAI  
CHAIRMAN  
TAUMATA-A-IWI

A handwritten signature in black ink, appearing to read 'Paul Tapsell'.

DR PAUL TAPSELL  
TUMUAKI  
DIRECTOR MAORI

# TAUMATA-A-IWI KAUPAPA

This abbreviated version of the Kaupapa sets out the principles upon which the Auckland Museum's Taumata-a-Iwi will discharge its responsibilities to Maori.

He whakarapopoto tenei o nga Kaupapa a Te Taumata-a-Iwi ki te whakatu he huarahi ki te tutuki pai i nga wawata mo nga iwi Maori o te motu.

Tamaki Paenga Hira/Auckland Museum's legislated (AWMM 1996) Maori Advisory Committee is known as the Taumata-a-Iwi. It is founded upon the principle of mana whenua (customary authority of and over ancestral land), and comprises Ngati Whatua, Ngati Paoa and Tainui. The Taumata-a-Iwi acts in a trustee role in representing all interests of Maori in the Museum.

Ko Te Taumata-a-Iwi te komiti matua mo nga take Maori katoa i roto i a Tamaki Paenga Hira. Ko ratou a Ngati Whatua, Ngati Paoa, a Tainui nga mana o te whenua. Ko Te Taumata-a-Iwi nga kaitiaki mo nga take Maori i roto i te whare taonga o Tamaki.

## Principle I: the right to advise Kaupapa I: tohutohu

The Taumata-a-Iwi will give advice on all matters of Maori protocol within the Museum and between the Museum and Maori people at large.

Ma Te Taumata-a-Iwi hei tohutohu i nga tikanga Maori mo Te Whare Taonga me ki waenga i Te Whare Taonga me nga Iwi Maori whanui.

## Principle II: partnership Kaupapa II: whakahoahoa

Both the Museum and the Taumata-a-Iwi will act reasonably and in the utmost good faith by encouraging the spirit of partnership and goodwill envisaged by the Treaty of Waitangi, recognising the Taumata-a-Iwi's cultural responsibility to wider Maori.

Ma te Tiriti o Waitangi hei whakahoahoa i Te Whare Taonga ki Te Taumata-a-Iwi mo nga take Maori.

### Principle III: Maori expectations Kaupapa III: nga tumanako Maori

The Museum recognises the right of all Maori to expect the Taumata-a-Iwi, on their behalf as the recognised kaitiaki of the Museum, to

- i. monitor the management of their taonga within the Museum
- ii. facilitate repatriation of all whakapakoko, uru moko and koiwi

Ka tau Te Whare Taonga i nga tumanako a nga iwi Maori, me te turanga a Te Taumata a Iwi hei kaitiaki mo nga take e whai ake nei:

- i. te tiakitanga o nga taonga i roto i te Whare Taonga.
- ii. he huarahi mo te hokinga o nga whakapaakoko, nga uru moko, me nga koiwi ki te waa kainga.

### Principle IV: active protection Kaupapa IV: kaitiakitanga

The rights of Maori in the Museum are protected, in kaitiakitanga terms, by:

- i. safeguarding mana whenua and the lore of Maori
- ii. safeguarding the tapu of the Museum's war shrines
- iii. providing appropriate management of all taonga
- iv. providing all staff and visitors with a culturally safe environment
- v. taking affirmative action in Maori recruitment, training and education

Te Tiakitanga o te mana a nga iwi Maori ma runga i nga ahuatanga nei:

- i. te tiakitanga o te mana o te whenua, me nga tikanga Maori.
- ii. te tiakitanga o nga waahi tapu o Tumatauenga.
- iii. kia pupuri tika i nga taonga katoa.
- iv. kia whai waahi tika mo nga kaimahi me nga manuhiri.
- v. kia whai turanga, akoranga, matauranga mo nga uri Maori.

### Principle V: redress for past misunderstandings Kaupapa V: te whakatikatika i nga he

The Museum acknowledges that there may be misunderstandings from the past needing redress and will seek the Taumata-a-Iwi advice to:

- i. objectively explore and assess each example as it comes to light
- ii. minimize and eliminate future needs for redress.

Ma Te Whare Taonga hei whai tohuohu mai Te Taumata-a-Iwi ki te whakatikatika i nga he no mua:

- i. kia whakawetewete i nga take kia tika ai.
- ii. whai huarahi mo apopo kia kore nga he kia puta ano.

# STATEMENT OF SERVICE PERFORMANCE

## Auckland War Memorial Museum Tamaki Paenga Hira Performance Targets

2005 | 2006

The following Performance Targets describe the principal initiatives carried out by the Museum during 2005/2006 in discharging its responsibilities to its community.

Measures were provided against which achievement of the Museum's initiatives are reported. These initiatives implement actions, which are aligned to goals and strategic themes which form part of the Museum's Ten Year Plan. This report shows the status of these initiatives at year's end, and commentary on the extent to which this achievement advances the Museum's pursuit of its five goals.

# MANAGEMENT & MAINTENANCE

## ACCESS & ENGAGEMENT

### INCREASE THE VALUE AND APPEAL OF THE MUSEUM FOR ALL

ACTIONS	MEASURES	STATUS AT 30 JUNE 2006	COMMENTARY
Maintain highest level of public satisfaction with Museum experience and services	<p>Increase visitor numbers from a forecast of 475,000</p> <p>Visitors for 2004/2005 to 506,500 (including schools programmes)</p> <p>80% of visitors surveyed by 30 June 2006 are satisfied or better</p>	<p>540,269 against budget 506,500.</p> <p>99% satisfied or better (80% excellent, 19% acceptable).</p>	<p>Target exceeded.</p> <p>Final quarter attendances remained strong despite lack of special exhibition. Strong marketing campaign and excellent visitor programmes were responsible for this.</p> <p>Satisfaction levels also exceeded.</p>
Provide education services to people in the Auckland region	<p>Increase education visitors from a forecast of 56,800 for 2004/2005 to 63,600 education visitors</p>	<p>Actual 62,910 (56,232 school groups and 6,266 Adult and Community education).</p>	<p>The decline in education visitor numbers in the last year or two has been halted and reversed, with an excellent year end result.</p>
Provide a dynamic exhibitions programme and events activity	<p>1 Special Exhibition</p> <p>4 Pictorial Exhibitions</p> <p>5 Temporary Exhibitions</p> <p>By 30 June 2006</p> <p>Deliver a programme of concerts, lectures, workshops and live programmes</p>	<p>Special Exhibition <i>The da Vinci Machines</i> opened 18 November.</p> <p>Five Pictorial Gallery exhibitions - <i>Hiroshima/Nagasaki, Nancy Adams, Peace in Afghanistan, Colours of NZ, Veterans Club</i> and <i>George Valentine</i>.</p> <p>Six further temporary exhibitions, <i>Ko Tawa, NZ Glass, Warwick Freeman, Content, Zambesi, Takapu Will Travel</i>.</p> <p><i>Dinosaurs Alive!</i> programme launched.</p> <p>Workshops held for all major exhibitions.</p> <p>Strong programme for <i>The da Vinci Machines, Volcanoes, Pasifika</i> and <i>Matariki</i>.</p>	<p><i>The da Vinci Machines</i> attendances finished 166% above budget with income 196% above budget.</p> <p>A comprehensive range of Temporary Exhibitions was achieved despite closure of the Decorative Arts galleries in November as a result of Gallery Renewal activities.</p> <p>No concert programme was offered because of the noise impact of construction activity and lack of suitable venue.</p>

## MANAGEMENT &amp; MAINTENANCE CONTINUED

## COLLECTION CENTRED

## TO BE NEW ZEALAND'S LEADING OBJECT BASED LEARNING AND RESEARCH CENTRE

ACTIONS	MEASURES	STATUS AT 30 JUNE 2006	COMMENTARY
Prepare collections held off site for move to Museum building	Collections prepared and packed for transport by 31 December 2005	97.5% of off site collections packed for safe transport. Final packing delayed due to rescheduling of project timelines.	An excellent result in the complex and demanding task of preparing some 2,500m <sup>3</sup> of collections for safe transport.
Engage in collaborative research on collection related themes in partnership with the University of Auckland and other agencies	One collaborative national-level research grant awarded in each of Human History and Natural History by 30 June 2006	<p>Ministry of Culture and Heritage Award in Oral History for oral histories of 21 Battalion (\$5000).</p> <p>Sainsbury Research Centre, University of East Anglia, Visiting Scholar award to Professor Roger Neich (£2750).</p> <p>Community Partnership Fund award in collaboration with NZ Electronic Text Centre, Victoria University of Wellington, for enhancements to Cenotaph Database (\$118,760).</p> <p>Community Partnership Fund award in collaboration with University of Auckland for research on 3D imaging of artefacts (\$95,000).</p> <p>University of Auckland research contract for analysis of marine samples for Environment Waikato (\$12,800).</p> <p>Te Papa research contract for analysis of Ross Sea marine invertebrates (\$19,345).</p> <p>University of Auckland Marsden Fund research subcontract for research on New Zealand Cuckoos (\$7031).</p>	The Annual target for Natural History has been met. A Digital Strategy Community Partnership Fund proposal has also been successful in Human History. Curatorial staff activity is being impacted by preparation of the new Applied Arts Galleries, <i>Vaka Moana</i> and <i>A Company</i> exhibitions, and reticulation of HVAC through all Natural History, Ethnology and Archaeology offices and laboratories.



## MANAGEMENT &amp; MAINTENANCE CONTINUED

## AOTEAROA, MAORI, PACIFIC

TO MAINTAIN OUR POSITION AS THE FOREMOST MAORI AND PACIFIC MUSEUM IN THE WORLD

ACTIONS	MEASURES	STATUS AT 30 JUNE 2006	COMMENTARY
Prepare <i>A Company Maori 28<sup>th</sup> Battalion</i> exhibition	Exhibition achieved by 30 June 2006	Proceeding satisfactorily.	Staff meeting with A Company personnel, gathering video and oral history interviews. Exhibition rescheduled to November 2007 as a result of Stage II building programme and availability of Auckland 1866 Gallery.

## AUCKLAND'S WAR MEMORIAL

TO BE THE PRE-EMINENT PLACE WHERE PEOPLE COME TO HONOUR AUCKLAND'S WAR DEAD

ACTIONS	MEASURES	STATUS AT 30 JUNE 2006	COMMENTARY
Work with Auckland City to achieve enhancement of Consecrated Ground, Cenotaph and environs	Ongoing programme of enhancement achieved in 2006	Positive discussions held with ACC officers and officer level undertakings given for repair and enhancement of the Consecrated Ground and Cenotaph.  Museum major partner in Auckland City Council Domain Master planning process.	Input into ACC Master planning process. Collaborating with RSA.  First draft of Master Plan for Court of Honour and Cenotaph released.
Include New Zealand Wars casualties in Cenotaph Database	Entered by 30 June 2006	105 Maori and 191 European records entered.	The collecting the preparation of Maori records is more complex, but work will continue to add these where available.

MANAGEMENT & MAINTENANCE CONTINUED

LEADING TEAM

TO HAVE A LEADING TEAM AND BE THE MUSEUM WHERE THE BEST PEOPLE WANT TO WORK

ACTIONS	MEASURES	STATUS AT 30 JUNE 2006	COMMENTARY
Identify and implement initiatives to improve satisfaction of staff and volunteers	5% Improvement in staff satisfaction as measured by the Organisation Culture Survey	The measure has been superseded by a new target of December 2006 in the Museum's Annual Plan 06/07. This target will be achieved and the reason for shifting the target date has been reported to, and accepted by the Board. A progress report will be made at 30 June 2006.	Achieved 'Leading Team' programme with Human Synergistics on track and ready for measure on, rescheduled date of October 2006. Advice from Human Synergistics received, proposing that this survey be postponed to approximately April 2007.

# DEVELOPMENT

## ACCESS & ENGAGEMENT

INCREASE THE VALUE AND APPEAL OF THE MUSEUM FOR ALL

ACTIONS	MEASURES	STATUS AT 30 JUNE 2006	COMMENTARY
Provide increased on-line access to collections records and data	20,000 additional collection records available on line by 30 June 2006	52,252 achieved.	Target has been exceeded.
Improve and extend information services provided through the Museum's web site	Increase the number of website uses from a forecast 299,000 in 2004/2005 to 315,000 in 2005/2006	395,681 achieved.	25% above forecast. Anecdotal response to new website is good. Services and information available are constantly being enhanced.
Upgrade Museum signage, way finding and information	All directional signage and way finding systems for Stage II and existing Museum prepared by 30 June 2006	All way finding signage for existing Museum installed.  Car park & car park lobby signage installed	Atrium signage in preparation. Stage II Signage design yet to be commenced. Signage to be installed November 2006 when occupancy of the Atrium is available.
Enhance and refresh permanent exhibitions	<i>Volcanoes</i> exhibition opened by 31 December 2005  East side (NZ) Applied Arts exhibition opened by 30 June 2006  West side (International) Applied Arts exhibition to be opened 30 June 2006.	Opened 17 December 2005  East side fit out completed but collection installation delayed to 20 November 2006 due to need to accommodate <i>Vikings</i> exhibition.  West side on track for opening in October.	Very satisfactory result. Public satisfaction extremely high.  East side design and preparation complete and all fit out constructed. West side design complete. Objects selected. Text copy prepared for review and editing.
Construct major additions to the Museum	Stage II basements, ground floor and education suite completed within budget by 30 June 2006	These and all other approved Stage II works on track for completion November 2006 and opening December 2006. The budget has been increased due to additional costs and fund raising has increased to cover.	Excellent progress being made and work being completed to a very high standard.

DEVELOPMENT CONTINUED

**COLLECTION CENTRED**

TO BE NEW ZEALAND'S LEADING OBJECT BASED LEARNING AND RESEARCH CENTRE

ACTIONS	MEASURES	STATUS AT 30 JUNE 2006	COMMENTARY
Ensure funding is adequate for the introduction of new facilities and new operations	Achieve Local Authority Levy income of \$19,786,000 in 2006/2007	Levy of \$19,884,000 approved.	All Councils visited and presentations made.
Prepare collections held off-site for relocation to new collection storage depots	All off-site collections registered and prepared for transport, and relocation underway by 30 June 2006	97.5% of collections registered and prepared.	Relocation delayed due to revised completion date of critical components of the Stage II Project.
Provide acceptable levels of climate control to Natural History and Archaeology collections	By 1 May 2006	Work is being carried out in conjunction with the Stage II project. New chillers operational, boilers are operational.	Reticulation to Natural History and Archaeology to be finalised in the coming months.

## DEVELOPMENT CONTINUED

## AOTEAROA, MAORI, PACIFIC

## TO MAINTAIN OUR POSITION AS THE FOREMOST MAORI AND PACIFIC MUSEUM IN THE WORLD

ACTIONS	MEASURES	STATUS AT 30 JUNE 2006	COMMENTARY
Build the Taonga Database so that it is a valuable tool for Maori communities and individuals	700 items researched, photographed and digitally registered by 30 June 2006	750 items digitally registered. 675 detailed descriptions completed on database.	It is pleasing to make so many taonga accessible to their communities.
Enhance the service provided by <i>Te Kakano</i> Pacific Resource Centre	Permanent staffing from July 2005	Achieved. Permanent staff have been appointed.	Significant improvement in public service at <i>Te Kakano</i> has been achieved.
Achieve greater engagement with Pacific Islands communities	Pacific Advisory Committee established by 31 December 2005	Established, 4 staff members participating.	The Pacific Advisory Committee met monthly during 2005 and is meeting bi-monthly in 2006. Working with staff on Stage II and <i>Vaka Moana</i> openings.
Provide major exhibition and book on the peopling of the Pacific	<i>Vaka Moana</i> exhibition and book on track for opening/publishing December 2006	Text and layout both complete. Concept Design signed off. Four international venues confirmed	<i>Vaka Moana</i> is an exhibition on Pacific voyaging and migration which is being developed by the Museum. Book development on track. Exhibition and tour endorsed by March Trust Board and on track.  Concept design signed off early July.  Negotiations with six potential international venues.

DEVELOPMENT CONTINUED

## AUCKLAND'S WAR MEMORIAL

TO BE THE PRE-EMINENT PLACE WHERE PEOPLE COME TO HONOUR AUCKLAND'S WAR DEAD

ACTIONS	MEASURES	STATUS AT 30 JUNE 2006	COMMENTARY
Conduct public programmes which create greater focus on important memorial days	ANZAC Day Programme, Armistice Symposium, War Memorial Special Days Programme	<p>Armistice Symposium papers published</p> <p>VJ Day commemoration held.</p> <p>Armistice Symposium held</p> <p><i>Veterans Club</i> opened</p> <p>MQ devoted to Year of the Veteran</p> <p>Successful ANZAC Day Programme</p>	<p>The 60<sup>th</sup> Anniversary services for VE and VJ Days were non-recurring events although the Museum is marking significant anniversaries more regularly. The Armistice Symposium is an annual event and was fully subscribed in 2005 meeting its costs from revenues received.</p> <p><i>Veterans Club</i> extremely well received by 21<sup>st</sup> Battalion Veterans, the RSA and public.</p>

## LEADING TEAM

TO HAVE A LEADING TEAM AND BE THE MUSEUM WHERE THE BEST PEOPLE WANT TO WORK

ACTIONS	MEASURES	STATUS AT 30 JUNE 2006	COMMENTARY
Enhance the staff team's capability through improved training and development activity	Restructure the staff training programme for 2005/2006 to relate directly to annual staff skills and competency review, and increase the resources available for staff training.	Competency training now identified through PPR process. Skills assessment introduced to PPR in readiness for 06/07. Skills training will be integrated into a total systematic personal evaluation and training scheme in 2006/2007.	Good progress has been made in improving staff performance planning and development systems. The 'Leading Team' goal should remain a major focus for the Museum in the immediate future.



# COLLECTIONS MANAGEMENT

## Access and Engagement

In a year when the primary focus for Collection Management lay in preparing collections for relocation to brand new storage facilities in the basement of the Grand Atrium, staff also achieved success in a number of other collection-related activities.

An especially exciting development in the Museum's online information services was the publication of the Cenotaph Database on the Museum's website, making available over 35,000 individual records relating to New Zealand military service men and women. An item about the Cenotaph Database broadcast on national television as part of ANZAC Day commemorations resulted in an unprecedented number of hits on the Museum's website. The Cenotaph Database was also the recipient of a major grant from the Community Partnership Fund, part of the Digital Strategy recently instigated by the Ministry of Internal Affairs. Funding of \$118,670 was awarded for further enhancements to the database, to be carried out in partnership with the New Zealand Electronic Text Centre at Victoria University of Wellington.

Funding from the Community Partnership Fund was also awarded to the University of Auckland in partnership with Auckland Museum, for a project to create three-dimensional digital images of artefacts from the Museum's Maori and Pacific Islands collections. \$95,200 was awarded for this project, which results from an exciting collaboration between the Museum and the EPICS Programme at the University's School of Engineering. EPICS (Engineering Projects in Community Service) is a programme that involves senior engineering students in helping community-based organisations to resolve technical challenges in their work. An enthusiastic team of students has been working with the Museum's curatorial staff to select artefacts and appropriate technologies for 3D imaging. This is cutting-edge science with tremendous potential to enhance the Museum's programmes and electronic access services.

Further developments to facilities and staffing of the Museum's information centres saw the Natural History Information Centre relocated into a beautiful new facility in the *Origins* Gallery designed by architect Rewi Thompson. The new centre opened on 5 July 2006, in time for the school holidays, and enjoyed an immediate increase in patronage from visitors as a result of its more prominent new location. Full-time staffing was achieved for the *Te Kakano* Pacific Information Centre.

Despite many rearrangements to workspaces necessitated by the building programme, preparations for exhibitions planned for the opening of the new building continued uninterrupted. Following the opening of the new, EQC-sponsored *Volcanoes* gallery in December, collections staff turned their attention to the



complex requirements of the New Zealand and International Decorative Arts Galleries. The City Gallery was dismantled, while a welcome return to the Museum's displays was made by the Castle Collection of musical instruments and the *Ancient Civilisations* Gallery.

The 24-hour BioBlitz event for 2006 was held in Henderson, studying the biota along the Opanuku Stream. The survey area covered 28 hectares of native forest, mown fields, planted trees and weedy areas. The Museum's team of Natural History curators coordinated the vascular plants, birds and mammals sections. From 2pm Friday to 2pm Saturday, the event involved the participation of over 50 scientists from the Museum, Department of Conservation, Auckland Regional Council and Landcare Research, each offering particular expertise along with their own enthusiasm and willingness to engage with the public. Over 1,200 species were recorded. Natural History staff also assisted the Department of Conservation to prepare displays for an exhibit on New Zealand's endangered species at the Pet Expo, Auckland Showgrounds.

While the Conservation and Registration functions of the Museum were preoccupied with preparations for moving collections to the new collections store in the Grand Atrium development, staff also managed to provide technical and logistical support to an energetic programme of special exhibitions and displays, including *Zambesi: edge of darkness*, *The da Vinci Machines*, *Vikings*, and the *Vaka Moana* exhibition scheduled to open with the new building in December 2006. Preparations for *Vaka Moana* were complex, requiring the coordination of loans from several international museums. During the year the Museum's specialised conservation laboratories were moved into temporary on-site premises as upgraded lab facilities planned as part of the Grand Atrium development were constructed. Despite the considerable upheaval, regular services to exhibition and loans programmes were able to be maintained, thanks to a dedicated team and careful planning.

The Museum and David Ling published *Fronting up: 100 classic New Zealand magazine covers* by Richard Wolfe, featuring covers from the Museum Library's serials collection.

REGISTRATION STAFF EXPERTLY PACK AN OBJECT IN PREPARATION FOR MOVING



STITCH MAGAZINE FROM FRONTING UP: 100 CLASSIC NEW ZEALAND MAGAZINE COVERS



## COLLECTIONS CENTRED

Planning for the new basement storage facility focused on specific object placements, to achieve a logical plan for collection areas, weights, heights, object types and frequency of access.

This exercise was like resolving a gigantic three-dimensional jigsaw puzzle as Registration, Conservation and Curatorial staff worked with storage consultants and contractors to achieve the most efficient plan for storing more than 2600 cubic metres of artefacts in a vast range of shapes and sizes. In parallel with new storage planning, an enthusiastic Registration team based at the Museum's off-site store achieved 97.5% of the careful packing and inventory tasks necessary to make collections safe and ready to move into the new facilities as soon as they are handed over. While 100% of the packing could have been achieved by 30 June consistent with the Museum's target for the year, it was decided to complete the final packing and registration tasks closer to the time of the move for practical reasons.

Ethnology staff carried out 417 artefact registrations under the Antiquities Act 1975, and participated in the redrafting of the legislation leading up to the passing of the Protected Objects Act 1975 on 2 August 2006. The amended legislation broadens the range of articles designated as protected objects and it is anticipated that Auckland Museum's expert staff will continue to carry out the majority of national registrations under the Act due to the concentration of artefact dealers in Auckland.

A comprehensive *Review of the Auckland Museum fish collection* compiled by Dr Clive Roberts and Andrew Stewart of The Museum of New Zealand Te Papa Tongarewa was completed and submitted to the Museum. The review was peer reviewed by Professor John Montgomery and Dr Kendall Clements of the University of Auckland. The review highlighted the enormous economic value of the fish collection in relation to the management of New Zealand's fisheries, and made recommendations for its care and maintenance in the light of new regulations under the Hazardous Substances and New Organisms Act 1996.

The Museum's small team of expert curators were very active in the community. Following his award of the prestigious Loder Cup for 2005, Botany Curator Ewen Cameron was awarded the Allan Mere award for 2005 by the New Zealand Botanical Society. Ewen also contributed to a Biosecurity Science Strategy workshop in Wellington organised by MAF Biosecurity to facilitate input into a Biosecurity Science Strategy for New Zealand, and a Department of Conservation Recovery meeting in Whangarei to finalise the Management

plans for three threatened plants of northern New Zealand. Conservation staff conducted a Preventive Conservation workshop at Matakoho Museum for members of the Northern Regional Museums Service, and participated in a joint New Zealand and AusHeritage forum at Te Papa, to coordinate New Zealand and Australian cultural heritage services to the delivery of programmes in the Asia and Pacific regions. Curator of Applied Arts Louis Le Vaillant acted as an assessor on the Creative New Zealand Craft/Object Committee, as external assessor for the Creative New Zealand Annual Funding programme for Objectspace and as co-selector of annual Craft/Object Fellowship. Library Services Manager Bruce Ralston made regular attendances at the National Digital Forum, ensuring representation for the Museum's nationally important electronic archives at the highest levels.

The Marine, Entomology and Land Vertebrates collections were closed for research and loans in preparation for installation of HVAC services to the south crescent of the Museum. Databasing was completed for naturalised specimens and scientific names updated on the herbarium database. Funded by the Auckland Regional Council's Biosecurity section, this work has meant that all New Zealand specimens (native, naturalised and cultivated) are now databased, totalling over 184,000 specimens. The entire collection of NZ moths and butterflies was rearranged and the database updated to align with the international *Species 2000* catalogue, resulting in over 13,000 moth and butterfly collection records being available online via the Museum's website. A five-year project was completed to reorganise the Museum's collection of birds' eggs, comprising some 3,500 eggs and clutches.

Volume 42 of the *Records of the Auckland Museum* was published. A special function was held for stakeholders to celebrate the 75<sup>th</sup> anniversary of the *Records*.

## Auckland's War Memorial

The *Veterans' Club* exhibition of 21 Infantry Battalion Association memorabilia opened on 24 March. History Curator Rose Young facilitated interviews with 21 Battalion Club members by David Steemson from Radio New Zealand. The Ministry of Culture and Heritage made an Oral History Award of \$5000 to the Museum to enable further oral histories of the 21 Battalion.

A ceremony was held on 17 March to mark the transfer to Auckland Museum of the Victoria Cross of Sergeant James Ward. The VC was previously held at the Airforce Museum at Ohakea. Four Victoria Crosses were lent to QEII Army Memorial Museum, Waiouru, for a display commemorating the 150th anniversary of the Victoria Cross decoration. The medals were: VC and New Zealand War Medal of Ensign E McKenna, 65th Regiment, for action near Camerontown, Tuakau, north Waikato; VC and New Zealand War Medal awarded to Captain Charles Heaphy, Auckland Volunteers, (the first VC awarded to a colonial soldier); VC awarded to C R G Bassett, New Zealand Engineers, for action on Chunuk Bair, Gallipoli, the first to a New Zealand soldier during WW1; VC and other medals of Private James Crichton, Auckland Battalion, for action in France during WW1.

Images from negatives and lantern slides of the 28 (Maori) Battalion were also scanned and printed to assist with an exhibition at the Omapere Tourist Hotel, Hokianga, for the National Maori Battalion Reunion at Easter. Auckland Museum staff attended the Reunion and continued discussions with Battalion representatives towards the exhibition of *A Company* rescheduled for 2007.

## Aotearoa, Maori and the Pacific

As the year progressed it was exciting to witness the *Vaka Moana* exhibition taking shape. This major exhibition on Pacific Islands navigational techniques and their cultural history has been developed by Auckland Museum at a time of much international interest in the traditional arts and heritage of the Pacific Islands. Another important Pacific heritage exhibition involving Auckland Museum collections and staff was *Pacific Encounters - Art and Divinity in Polynesia 1760 - 1860*, which opened in May at the Sainsbury Research Centre, University of East Anglia, UK. The Museum's Curator of Ethnology, Professor Roger Neich, was Visiting Scholar at the Sainsbury Centre, to participate in events associated with the exhibition. Roger presented a paper on Tongan goddess figures, and attended a Pacific Arts Association conference at Cambridge University's Museum of Archaeology and Anthropology. Curator Pacific Fuli Pereira served as courier of Polynesian collection items to the Pacific Encounters exhibition. She also attended a Polynesian Research Workshop at the Sainsbury Research Centre and the Pacific Arts Association conference at Cambridge University. During the year Fuli was interviewed weekly on Radio 531PI's morning show about activities at Auckland Museum, as part of the museum's efforts to reach Pacific communities through a range of media.

Curator Maori Chanel Clarke completed a research fellowship at the Peabody Museum, Salem, Massachusetts, funded by the American Museums Association. Throughout the year a steady stream of researchers visited the Maori collections as part of a number of iwi initiatives to compile databases of iwi-associated taonga in museum collections. Auckland Museum's detailed Taonga Database, which brings together in electronic form the relevant records for taonga registered in the Museum's collections, was a vital tool for researchers engaged on these investigations. Iwi groups who consulted the Taonga Database included Ngati Porou, Te Runanga o Arowhenua and Rongowhakaata, in conjunction with National Services Te Paerangi, Tairāwhiti Museum, Gisborne, and the New Zealand Historic Places Trust.

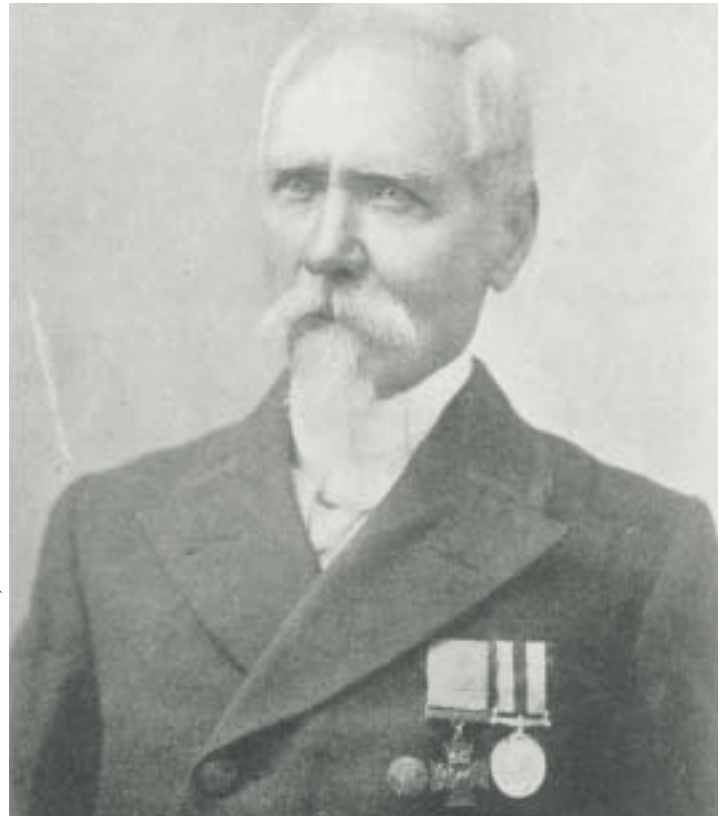
21ST BATTALION ASSOCIATION AUCKLAND CLUBROOMS



THE JOHN LOGAN CAMPBELL CHAMPION CHALLENGE BELT



CAPTAIN CHARLES HEAPHY, VC



# ACQUISITIONS

## Photographs of the South Sea Islands

An album, *Photographs of the South Sea Islands*, probably compiled by George Montague John Higginson, who was Assistant Paymaster on board the British naval ship H.M.S. *Curaçoa* in the early 1860s.

The large format album contains 150 photographic prints of varying sizes, mostly by Higginson, many of which are previously unknown images. These include 58 images showing aspects of the Waikato campaign of the New Zealand Wars, doubling the number of known photographs of this campaign. An important group of 11 images of Rangiriri adds considerably to knowledge of Maori defenses at the decisive battle of the Waikato War. Interior views of the Maori church at Rangiriri, damaged by shelling, and the church at Ngaruawahia, are of major importance for the study of Maori architectural development and decorative styles. A rare landscape view of the Maori King's settlement at Ngaruawahia shows the relationship of the main buildings and the carved meeting house of King Tawhiao. In addition to images of the New Zealand Wars the album includes scenes from the islands of Samoa, Tonga, Fiji and the New Hebrides, with previously unseen portraits of King George Taufa'ahau of Tonga and King Thakobau of Fiji.

## Ward VC Collection

The collection relating to Pilot Sergeant J A Ward VC was presented to the Museum by his niece, Mrs J Bell of Darwin, Australia.

Sergeant James Allen Ward of Wanganui was the first New Zealand airman to be awarded the Victoria Cross. *The Register of the Victoria Cross* (p. 325) gives the following account of Ward's action: On 7 Jul. 1941 after an attack on Munster, Germany, fire broke out in the Wellington bomber in which Sergeant Ward was second pilot. The skipper of the aircraft having told him to try to put out the fire, the sergeant crawled out through a narrow astro-hatch, scrambled to the back of the starboard engine which was alight, and smothered the flames with an engine cover. His crawl back over the wing in which he had previously torn hand and foot holes, was more dangerous than the outward journey,

but he managed it with the help of the aircraft's navigator. The bomber eventually landed safely. Ward was killed three months later, in action over Hamburg, while captain of Wellington IC bomber X3205. X3205 was one of 12 aircraft (out of 169) to be lost on the night of 15 September 1941, when it was hit by flak over the target area and crashed. Four of the crew died, including Ward. He had logged 305 flying hours and was on his 11th operation. The collection presented to the Museum includes all letters written home by Ward while in 75 Squadron, the 78 rpm recording made at the underground BBC Studio in London of his message to New Zealand Forces serving in the Middle East, a scrapbook relating to the VC, several photo albums and numerous loose photographs.

## Woodward WWI Medals

WW1 medals of William J Woodward, 1st Battalion Auckland Regiment, presented to the Museum by Mr D R Cholmondley-Smith.

These include Woodward's Military Cross and citation awarded for conspicuous gallantry and devotion to duty from 29th September to 3rd October 1918, during offensive operations east of Ribencourt and Masnières. As bombing officer he superintended the formation of ammunition-dumps and the distribution of the same to the forward companies. Although under intense fire most of the time, especially when he, another officer, and two men, were in the centre of an artillery "crash", the officer being wounded, he at all times kept the troops supplied with their requirements of munitions. He saved the officer's life by bandaging his wounds and conveying him to safety.

## Coconut Shell Container

A souvenir coconut shell container, commemorating the Samoan Relief Force, 1915-1917, WW1.

The first action New Zealand troops were involved in during WW1 was the occupation of Western Samoa which was a German possession. The Samoan Advance Party of 1413 men landed unopposed at Apia on 29 August 1914. That unit was replaced in March 1915 by the Samoan Relief Force which stayed in Samoa until the end of the war and after.

## Ponsonby Rugby Club memorabilia

Material formerly belonging to Freddie W Lucas, of the Ponsonby Rugby Club.

Freddie Lucas was an Auckland representative and member of the famous 1924 All Blacks team called 'The Invincibles', which returned unbeaten from a 32-match tour of the British Isles, France and Canada. Items include an Auckland rugby jersey and cap, a pair of miniature rugby boots presented to members of the 'Invincibles', and a gold medallion from the 1923 War Memorial match between Auckland and Hawke's Bay, played at the Auckland Domain to raise funds for the future War Memorial Museum building.

## Hotunui Watercolour

A watercolour by nineteenth century artist Christopher Aubrey of the meeting house Hotunui which graces the Museum's Maori Court.

Maori Meeting House at Parawai, Thames is signed and dated 1898. The painting was acquired by the Californian based vendor in 1991 in an antique shop in Washington State, USA. It is the only painting of Hotunui held by the Museum.

## Gina Matchitt Shopping Totes

Four designer shopping totes by contemporary Maori artist Gina Matchitt from her recent series entitled *Where Everyone Gets a Bargain*, that explore the connection between economic power and the use of language.

These works help fulfil the aim of the Auckland Museum ethnology collections to include selected aspects of contemporary art, specifically those fields of Maori and Pacific Island art that derive from, related to, resonate with or bear reference to the traditional arts of these groups. Though humorous in nature these works lend themselves to more serious discussions such as the relationships between multinationals and indigenous communities worldwide.

## The John Logan Campbell Champion Challenge Belt

Sir John Logan Campbell is credited with the introduction of Volunteer Forces in New Zealand when as Superintendent of Auckland Province he had £1000 put aside for the purchase of quality rifles with a view to arming a volunteer rifle corps. At the same time he established a marksmanship prize for the proposed rifle clubs - the JL Campbell Silver Vase and the Campbell Champion Rifle. Both were competed for in 1859 and in 1860 the Champion Rifle was replaced by the Campbell Challenge Belt. The belt was competed for at competitions run by the Auckland Rifle Association and was won consecutively in 1866, 1867 and 1868 by Arthur Morrow, who believed he should therefore retain the belt permanently, but Campbell declined this request. However in 1906 another three-time winner, CW Atkinson, claimed the belt and refused Campbell's offer of a silver salver as a substitute. Rather than lose the annual prize, Campbell had a replacement belt made in 1907 with silverwork by A Teutenberg. The belt was handed over to the Officer Commanding Auckland Military District with the proviso that should it no longer be competed for, it was to be placed in the Auckland Museum. The belt was last competed for in 1987, and was subsequently mislaid, with several efforts to locate it being unsuccessful until recently, when it was rescued from a rubbish dump and finally acquired for the Museum's collection.

## The Auckland Meteorite

This 1.3 kilogram piece of space rock made headlines around the world in June 2004 when it crashed through the roof of a house in Ellerslie. The 4,600 million year old meteorite is a stony type that resulted from the collision between two asteroids in the Asteroid Belt, a vast ring of space debris between the orbits of Mars and Jupiter. The meteorite contains flakes of iron and measures 13 cm in length, but would have been the size of a basketball when it hit the earth's atmosphere. Distinctive 'flow lines' visible on the leading face are caused by the rock surface heating to melting temperature as it hit Earth's atmosphere at a velocity of about 15 km per second. It is only the ninth meteorite ever found in New Zealand and the first to hit a home.

## 500 clean rat and mouse skulls

from Landcare Research

The Land Vertebrates collections received a gift of ca. 500 clean rat and mouse skulls from Landcare Research. These skulls are voucher specimens from an important published study of introduced rodents in Pureora Forest conducted by two Landcare Research scientists.

A set of three resin *hei tiki* and a signature corian *koauau* made by contemporary Maori artist Rangi Kipa

A very fine collection of Maori fishhooks from Waihou Bay, East Coast

A very finely carved Maori tobacco pipe with no known history

A Maori carved eel killer of unique form, with no known history

A New Guinea highlands woven ritual figure *timbawara*

A New Guinea highlands shield painted with Phantom motif

A pair of fine Burmese puppets

THE AUCKLAND METEORITE



FREDDIE LUCAS - ALL BLACK, 1923



THE ROYAL NAVY CAMP AT TE AWAMUTU, 1864,  
FROM PHOTOGRAPHS OF THE SOUTH SEAS ALBUM



# PUBLIC PROGRAMMES

Auckland Museum Public Programmes provide dynamic exhibition, education and visitor programmes based on the concept of lifelong learning.

It also operates commercial services which extend the visitor experience whilst returning revenue to the Museum. The various programmes and commercial services are effectively marketed to our diverse audience while the visitor's experience is enhanced by the professionalism and friendliness of our Front of House staff.

2005/2006 was a very successful year for Auckland Museum. Attendance records were broken and commercial returns were high. The fact that this occurred during the most disruptive period of the Stage II building campaign, greatly reducing temporary exhibition space, and during a period which saw a decline in international tourism to New Zealand is a testament to the creativity, energy and fortitude of the Museum's staff.

## Access and Engagement

Attendances were 18% up on last year's figure. The bulk of the increase came from Aucklanders (up 33% on last year) and justifies the decision taken in May 2004 to concentrate upon the local audience. New Zealanders now account for over 50% of the Museum's adult audience with Aucklanders making up 38%. Similarly access through the web site has increased by 35% while the e-news and e-education news have proved remarkably successful. This year also saw the re-launch of the MQ magazine into a quality quarterly publication that has received much critical acclaim.

Three major attractors for our local audience this year were the exhibition *The da Vinci Machines*, the new permanent gallery, *Volcanoes* and the visitor programme *Dinosaurs Alive!* *The da Vinci Machines* attracted 103,649 visitors, four times more than its budgeted number [see storybox] while the *Dinosaurs Alive!* programme attracted approximately 60,000 visitors to the Museum since it was launched at the beginning of the financial year [see storybox]. The new gallery *Volcanoes* was funded by a generous grant from EQC and tells the story of volcanism from both the local and universal and from the human and scientific perspective. Importantly it simulates the effect of a volcanic eruption in Auckland and is therefore a most useful educational tool for EQC [see storybox].





## Volcanoes

The challenge facing the production team in designing the *Volcanoes* gallery was the creation of an engaging display without large numbers of compelling objects. The gallery is divided into a number of sections, constructed around selected storylines, and featuring a combination of graphic presentations, audio-visual and interactive components, and objects carefully displayed to engage visitors' interest. Variation in the presentation of information ensures younger and older audiences are informed and entertained by each section.

The display focuses on Auckland, and also features volcanoes of the North Island and Pacific, and other overseas locations.

Narratives were selected with the human experience in mind: the impact of volcanic activity on individuals, communities and societies, both historically and in the present. As an underpinning concept this presents visitors with accessible and compelling human stories embedded in a scientific subject.

The display also features an immersive experience, which is introduced at the entrance to the gallery, in the form of a television display creating an illusion of an imminent Auckland eruption. The experience concludes at the endpoint of the display where visitors enter a house and watch an audio-visual presentation of a volcanic eruption in the Auckland harbour; the house responds with time-coded shaking and loss of lighting.



## Outreach exhibitions

This year the Museum initiated its programme of developing small outreach exhibitions to travel to the seven Territorial Local Authorities which fund the Museum. The initiative has been well-received by all Authorities approached to date.

Drawing on the Museum's wonderfully rich pictorial collections, Museum staff have begun working with Council officers to develop pictorial exhibitions featuring photographs, maps and other graphic material, which tell a selection of stories related to the Council and its environment. Exhibition locations are chosen in collaboration with each Council, focusing on central locations accessible to a variety of regional community and visitor groups.

Once the images have been selected they are scanned and then printed. The advantage of this procedure is that each Council will be left with a set of high-quality images for their collection. This procedure also ensures that we can transport the exhibition to venues where the environmental conditions and security would preclude sending originals.

While the Museum has already toured one outreach exhibition, *Unseen China to 'Te Tuhi ~ the mark'* in Pakuranga (Manukau City Council) in this year, plans are well developed to open a pictorial exhibition on Franklin's history to coincide with the opening of the new Franklin art centre for its opening in May 2007.

Integral to all these exhibitions and gallery renewals has been the role of visitor programmes and education in providing interpretation and programmes. Education numbers are up by over 30% on last year and include over 6000 adult and community education visitors. Part of this development is the extensive lecture programme run in conjunction with the University of Auckland's Centre for Continuing Education and the Auckland Museum Institute which is proving a very effective lever for engagement. The schools education section has also functioned very well. It has run a number of new innovative programmes that have increased the numbers and widened the demographic of the schools it serves. An indication of its success was the decision by the Ministry of Education to increase its funding of the schools programme to \$200,000. This year also saw the establishment of the Education Reference Group with members drawn from all educational sectors.

One of the reasons for the success of the Museum in increasing its positive engagement with the local community has been the very effective and integrated marketing of all its programmes and services. Understanding that marketing must be integrated right from the inception of the various programmes and not a later "add on" has ensured that the marketing message is consistent and persuasive.

Despite the building programme and the downturn in tourism the commercial services have had a successful year with revenue up by 30% from last year in the hospitality portfolio. Commercial plans for the entire Museum's business have been developed and endorsed by the Trust Board and the car park opened, though business here will remain subdued until Stage II is opened.

## Collection Centred

The Museum's Education Services continued to provide object based learning opportunities and this year increased the number of school students by over 16%. Importantly included in this increase were groups from a number of schools that have rarely visited the Museum in recent years.

## Aotearoa, Maori, Pacific

The taonga based exhibition *Ko Tawa* continued a successful tour in the North Island going to Porirua and Whangarei where it has attracted good audiences, many of them Maori. Work on the major internationally touring exhibition *Vaka Moana* is well advanced and five international venues are committed to the tour which will begin in 2007. This exhibition tells the untold story of the greatest migration in human history, the exploration and peopling of the entire Pacific.

The Pacific Islands Advisory Committee met throughout the year and has played a very helpful part in developing ideas for the opening of *Vaka Moana* and the Museum's involvement in the Pasifika Festival. The Museum was actively involved in this year's Pasifika Festival with various demonstrations and performances. The schools programme *Tala Pasifika* has continued to run this year and has attracted a wide audience including many schools with large numbers of Pasifika students.

Auckland Museum took the lead role in the celebration of Matariki this year with a programme based upon the theme of Taonga Puoro. Importantly the programme was developed and implemented primarily by Maori staff from across the institution.

## War Memorial

In November the Museum held its second annual Armistice Symposium. Entitled *Why Afghanistan?*, it was co-presented with AUT and attracted over 80 participants. Speakers included serving members of the NZDF, academics from New Zealand and Australia, NGO representatives and refugees. Sir Paul Reeves chaired the symposium and it was supported by both the NZDF and the Australian High Commission. The Symposium was accompanied by an evocative exhibition of photographs from Karl Woodhead who was part of the Regional Reconstruction Team at Banyam in Afghanistan.

Anzac Day attracted over 7000 visitors to the Museum despite the atrocious weather and the whole programme reflected much greater cooperation and coordination between the Museum, the ACC and the RSA. Another feature

of the day was the extent of family-based programming which was a first for this Museum. The team initiated a poetry competition and the results elicited tears from the veterans present during the reading. The response from families to the presence of a World War I nurse character and to family tours of *Scars on the Heart* was very encouraging. The same level of cooperation and goodwill is being evinced in the ongoing discussion regarding the upgrade and refurbishment of the Court of Honour and the Cenotaph. Other major commemorative days included VJ Day.

The *Veterans' Club* was a unique exhibition stage to coincide with Anzac Day this year. Consisting of memorabilia and fixtures from the club rooms of Auckland's 21st Battalion who, on their 50<sup>th</sup> anniversary, decided time had caught up with them and donated the contents of the club to the Museum. The exhibition consisted of a relatively literal recreation of their club rooms and was staffed at times by veterans from the 21<sup>st</sup>. The intergenerational learning and respect that occurred, especially with school groups, was very moving.

The school's Armoury-based programme has continued to attract large numbers of senior school students and planning is underway to see how this programme can be provided in part electronically to schools.

## Leading Team

Staff have coped very well with the pressures that the Stage II building campaign has inevitably imposed and have produced an excellent result for the year. Part of this workforce includes our volunteers who now number over 200. Without their generous and unstinting support much of what has been achieved this year would not have been possible. Equally important has been the infectious spread of a positive customer focus from the Front of House staff to all Museum staff.

VETERANS' CLUB EXHIBITION OPENING



DINOSAURS ALIVE! PERFORMANCE



THE DA VINCI MACHINES EXHIBITION





## The da Vinci Machines

*The da Vinci Machines* represented a successful collaboration between a group of Italian artisans and the Museum. The exhibition featured models made from drawings and designs by Leonardo da Vinci. A number had interactive components.

The exhibition was a compelling presentation of Leonardo da Vinci's ideas, recreated using a combination of contemporary technology and traditional artisan skills. The models were produced largely using materials available in the sixteenth century, yet were robust enough for an interactive experience, engaging the younger audiences.

Exhibition design and contextual interpretive material were provided by the Museum, delivering a complete experience for visitors, in particular for older audiences looking for historical context.

The presentation of a sixteenth-century artist's world, combined with technology and design of historic and contemporary relevance, underpinned the exhibition concept and undoubtedly contributed to its success.



## Dinosaurs Alive!

With the disruption caused by the Stage II building programme and the consequential reduction of temporary exhibitions the Museum realised it needed a strong visitor programme to attract visitors. Accordingly we turned to the tried and true formula of dinosaurs but with a twist. Instead of using casts of fossils, which seem to lack vitality, or computer graphics or robotics, the Museum turned to puppets. In this case they were full sized and very life-like puppets created by the Sydney based physical theatre company EARTH.

Based on dryosuars, which once roamed New Zealand, these full sized puppets contain the puppeteer inside them who controls many of their movements, including the eyes and tongue, by a sophisticated system of levers and cables. They are extremely life-like and have startled many an unsuspecting tourist as they have ambled through the galleries. Their programmed shows attracted over 60,000 visitors throughout the year and have added a significant dimension to the content of the gallery and its exhibitions.

The synergy between puppetry and museums is a very productive one, and helps enliven the galleries. It is also refreshing to see that artistry and the relatively low tech can at times provide a more vibrant experience while at the same times costing much less than the high-tech alternatives.

# FINANCE AND FACILITIES

The Finance and Facilities Section looks after the Museum's finances, building and facilities.

## Finance

An operating surplus of \$627,000 compared to a budget of \$400,000 was achieved despite the difficulty of operating in a building undergoing extensive alteration and the closure of the Exhibition Hall and City Gallery for renewal. Interest revenue was above budget due to improved interest rates and an improved cash position due to a lag in capital expenditure. Exhibition revenue was well above budget due to the success of The da Vinci Machines exhibition and the Dinosaurs Alive! shows. In accordance with Board policy the exhibition surplus has been transferred to the Exhibitions Reserve.

Capital Expenditure related transactions include a further \$9.6 million raised and additional reserves have been identified to fund aspects of the Stage II Grand Atrium project.

The Financial Statements have been reformatted into Maintenance and Management, and Development to align with the Annual Plan

A web based leave request and payslip system has been implemented to streamline payroll. The payroll system has been upgraded to record new sick and alternative leave legislation.

The electricity supply contract has been tendered and let to Meridian Energy for 3 years.

Requests for proposals were invited from auditors and Deloitte was reappointed.

### Financial Reporting Standard 3 (FRS-3) Accounting for Property, Plant and Equipment

FRS-3 has been effective since 2002 and requires that all assets (including heritage assets meeting appropriate definitions and donated assets) be recorded at fair market value and depreciated over their estimated useful life as a representation of consumption of asset.

The Museum has elected to depart from FRS-3 in this respect and, consistent with previous years, costs incurred in acquiring heritage assets have been expensed and no values have been attributed to gifted assets. This is on the basis that the collection items are heritage assets and that they are held in trust in perpetuity for the public good, and that obtaining valuations for collection items would be virtually impossible.

The adoption of this position by the Museum has resulted in an audit qualification. The Museum has made representations to the Institute of Chartered Accountants regarding its concerns with the application of the standard to heritage assets and has made submissions on the discussion paper Accounting for Heritage Assets.

### NZ International Financial Reporting Standards (NZ IFRS)

The Board has decided to make the transition to NZ IFRS in the year ending 30 June 2008. An impact study has been carried out and planning is underway to ensure that the Museum will be able to make the transition and provide comparative figures.

## Facilities

The Operations team have been very busy coping with the construction project impacts, moving staff, constructing a new staff room and establishing workshops in the new basement. The carpark equipment is operating, new doors installed in the Maori Court, uninterruptible power supply installed and a web based maintenance system implemented. New air-conditioning equipment is now servicing the galleries, controlled by a new building management system which will also run Stage II.

The Display and Gallery Maintenance teams have been engaged with gallery renewal in the *Volcanoes* and *Applied Arts* exhibitions, reinstalling the Castle and Civilisations galleries, and with da Vinci, Vikings and pictorial exhibitions. Scheduled gallery and lighting maintenance has also been carried out.

Audio Visual staff have been occupied with multi-media renewal and maintenance, providing advice to the Project and servicing numerous functions.

A new Safety and Security Manager was appointed and the position of Security Systems Officer created from within establishment to address the increasingly technical nature of safety and security. An improved Museum Environment Safety and Health System, Business Continuity Plan and Pandemic Management Plan were implemented.

IT infrastructure has been upgraded including new intranet and public database servers. Improvements have been made to booking systems and public access systems. A satisfaction survey and an independent review have been carried out and recommendations actioned. Servers and the pbx have been moved to the new server room.

# MAORI VALUES

Over the past 12 months the role of the Maori Values Team in Tamaki Paenga Hira has been enhanced through strategic appointments and institution-wide training.

Kei te haere tonu a Awhina Rawiri raua ko Cathrine Jehly i nga mahi whakaputa korero mo nga taonga. Neke atu i te 700 o nga taonga kua urua i te rorohiko hei ahei i nga iwi i roto i te mahi rangahau. Mai te timatanga o te tau nei, kua awhina atu raua i nga iwi ki te whai i nga korero mo nga taonga; Ko etehi o nga iwi ra ko Ngati Porou, ko Taranaki, ko Rongowhakaata, ko Ngai Tahu me Te Arawa. I whakatu nga hui a te whare taonga me nga iwi a Ngati Hine, Te Roroa me Ngati Kahungunu hei korero mo te tiakitanga o nga taonga e takoto nei. Apiti atu i tena kua whakaritea a te Curator Maori i tetehi huarahi matua mo nga whakaaturanga Maori e aro atu mo nga tau kei eke mai tonu. I te mutunga o tenei tau kua awhina atu nga mema Maori o te tari Tikanga - a Iwi ki te whakahou i nga waahi e whakaatu i nga taonga. Katahi te mahi nui nei, hei whakapaipai i nga taonga i roto i nga keehi, hei whakatikatika i o ratou tohu whakaingoa hoki.

Na nga whakaritenga o te wahanga tuarua o te whare taonga (ara a Stage II), kua whaiti nga waa mo nga roopu e hiahia ana ki te titiro ki nga taonga. Ahakoa tena, na te tari Maori i manaaki, hei tiaki tonu i nga manuhiri katoa i roto i nga hotaka araa a Matariki, me nga taonga hou kua urua i te Decorative Arts Galleries.

## Maori Values

Over the past 12 months the role of the Maori Values Team in Tamaki Paenga Hira has been enhanced through strategic appointments and institution-wide training. Each member carries dual matrix-managed responsibilities in the everyday work: on one hand they maintain accountability to their line managers, be it in Public Programmes or Collection Management, while on the other they maintain things Maori on behalf of the Taumata through the Tumuaki. The international *Ko Tawa* Project (Captain Gilbert Mair touring exhibition) is working testament to the hard work and time each member of the Maori Values Team has invested, ensuring these prized taonga become accessible again to a new generation of descendants both living at home and away in urban centres here and overseas.

Last year's intense period of preparing three major Maori projects at Tamaki Paenga Hira: namely the Ancestral Human Remains Return to Source project, Taonga Database project



and the touring of *Ko Tawa* project, has resulted in raising the Museum's profile nationally and internationally. The Ancestral Human Remains Facilitator has continued meeting elders around the Motu, clearing the way for them to receive home their tupuna koiwi and working alongside an international repatriation specialist contracted to Tamaki Paenga Hira.

The Taonga Database Team continues to improve digital access to iwi/Maori communities with over 1000 new entries onto the Taonga Database. Over the course of this year they have also assisted a number of iwi with access to information on their museum held taonga and these have included; Ngati Porou, Taranaki, Rongowhakaata, Ngai Tahu, and Te Arawa. Hui have also been held with several other iwi regarding taonga held by the museum and these have included; Ngati Hine, Te Roroa, and Ngati Kahungunu. Stage II construction has severely limited our usual service to visiting groups due to the inaccessibility of all of our storerooms. However Maori Values staff have continued to find creative ways to alleviate this by displaying taonga, complimenting the successful Matariki programme as well as contributing new taonga acquisitions to the new Decorative Arts galleries.

The latter part of the year has seen Maori Values staff in Ethnology undertake a major gallery refreshment programme in conjunction with Gallery Maintenance. This has enabled much needed maintenance work to be carried out in the galleries; including object replacement and object cleaning. This will be followed by a complete label replacement providing revived gallery spaces. In addition the Curator Maori has worked hard developing a Forward Plan for Maori Exhibitions which will be instrumental in providing a blueprint for the creation of a dynamic exhibition programme for the coming years.

The Educator Maori continues to present Maori gallery introductions to visiting primary, intermediate and secondary schools, including kura kaupapa Maori, Whare Waananga and tertiary groups. A visiting group may often link to *Te Kakano* (the Pacific Resource Centre) to further their study of the Maori and Pacific collections. The Educator Maori will continue to support the *Ko Tawa* touring exhibition primarily through guide training and programs for visiting schools. He is currently developing the Maori elements within public programmes – *Vaka Moana*. As with the permanent exhibition (*Volcanoes*), the Educator Maori is currently involved within the renewal of the museums' children's discovery centre, *Treasures and Tales*.

Winter warmed with the appearance of Matariki in June's pre-dawn skies. This year the Museum acknowledged this special time with respect to traditional Maori musical instruments, such as the *koauau*, *putorino*, *pukaea* and the

goddess of music, *Hineraukatauri*. The Educator Maori project led a committed team that delivered a colourful range of exciting events and activities as a public program. The success of this year's program has set the planning wheels in motion for a promising future set for Matariki at the Auckland Museum.

The Maori Values Team continued to train staff across the Museum with a series of two Maori Values in Museums Training Programmes throughout the year and regular waiata sessions for staff. The Tamaki Paenga Hira Kapa Haka group was also formed and participated in the Tamaki Makaurau Regional Kapa Haka Competition 2006.

The Museum hosted Te Hikuroa Region of Maori Librarians convened by the Educator Maori. The Librarian Maori worked on developing reference tools increasing accessibility to the Museums Library Collection including the Tainui Pathfinder (a list of resources within the Museum Library), a bibliography of resources for *A Company, 28 (Maori) Battalion* within the Museum Library and National Library and the Early Maori Imprints catalogue for the Museum Library Database. The Librarian Maori also represented the Museum at the Maori Subject Headings launch at National Library.

Hikitia Barton and Janneen Love were appointed to permanently staff *Te Kakano* early in the year and Christina Tuitubou was appointed as Manager, Information Centres. *Te Kakano* is now fully operational better providing information services, developing new strategies to engage with Museum visitors and contributing to various projects such as the New Zealand Wars Database.

*Te Kakano* supported the Matariki Programme by hosting poi workshops and story telling sessions which brought a diverse group of people to the Centre. The Centre also hosted *Curator in the House* workshops where children made clay tiki with the Curator Maori and Ethnology staff.

This year has seen a steady increase in visitors to *Te Kakano* with increased awareness. Visiting groups have included the University of Auckland, Unitech, Te Wananga o Aotearoa, Anamata students, and a Waka Ama group from Huntly. *Te Kakano* has also developed a newsletter available to subscribed Museum staff and visitors titled *Te Kakano Notes*.

# HUMAN RESOURCES

The focus within Human Resources for 2005-2006 was to continue with the organisational cultural development processes in alignment with the key goal of 'Leading Teams'.

Human Synergistics, an external consultancy, continued to assist with implementing assessment mechanisms which would analyse organisational behaviour, culminating in a plan to further enhance constructive cultures throughout the Museum.

The Performance Planning and Review Process (PPR) entered its second year of implementation. This also included evaluating and initiating a Skills Matrix process which was inclusive of the PPR process. The Skills Matrix focused on assessing the knowledge and experience required for staff to perform and meet the objectives of their position descriptions. Training was also provided to staff throughout this process.

Results from the PPR process, and from the Human Synergistics assessments, revealed that there is further development required in the areas of communication, interpersonal skills, leadership, coaching, including further enhancement of the performance management capability of staff.

To ensure that the organisation reaches and maintains these objectives for staff, a Learning and Development framework has been researched and designed. Implementation of the framework will commence in the 2006-2007 year and will encompass a robust learning needs and analysis of staff training requirements.

A Learning and Development database has been established which will track individual staff development training. This system will be utilised to measure the impact of learning back into the organisation. Value-added mechanisms will be put in place which will also help track personal, professional and organisational development.

Improvements have been made to In-Service Induction programmes, and an Orientation Programme outline has been configured to cover all compliance perspectives for newly appointed staff.

Compliance measures have been put in place so that all employment agreements are in accordance with the amendments to the Holidays Act 2003 and the change in leave requirements for 2007.

# OUR ORGANISATION

## STRUCTURE



# FINANCIAL STATEMENTS

Statement of  
Accounting Policies 48

Statement of  
Financial Performance 50

Statement of  
Financial Position 52

Statement of  
Movement in Equity 53

Statement of  
Cash Flows 54

Notes to Financial  
Statements 55

Audit Report 64

# STATEMENT OF ACCOUNTING POLICIES

FOR THE YEAR ENDED 30 JUNE 2006

## General Accounting Policies

These financial statements for the Auckland War Memorial Museum are prepared in accordance with Statements of Standard Accounting Practice and Financial Reporting Standards issued by the Institute of Chartered Accountants of New Zealand.

The measurement basis adopted in the preparation of these financial statements is historical cost, modified by the revaluation of the investment property.

## Particular Accounting Policies

### REVENUE RECOGNITION

Grants, donations, subsidies and sponsorships (including those for capital expenditure) are recognised when eligibility has been established by the granting agency and to the extent that any conditions imposed have been met at balance date.

Trust income is recorded in the special purposes segment of the Statement of Financial Performance. Appropriations from special purposes equity for operating purposes are transferred in the Statement of Financial Performance.

### INVENTORIES

Trading inventory is valued at the lower of cost and net realisable value on a first in first out basis.

### RECEIVABLES

Accounts receivable are recorded at net realisable value.

### PROPERTY PLANT AND EQUIPMENT

#### Land Lease

No value has been placed on the lease in perpetuity from the Auckland City Council of the land on which the Museum building is situated.

#### Heritage Assets

The cost of acquisition of heritage assets is charged to the Statement of Financial Performance. The classification of the collections and the Museum building as heritage assets is based on the premise that they are held in trust in perpetuity for public benefit.

#### Operational Assets

Operational assets including new additions to the building are stated at cost less accumulated depreciation.

## DEPRECIATION

All depreciation is calculated on a straight line basis and the respective rates are:

Heritage Assets	Nil
Operational Assets	
Buildings	1 - 2%
Plant	5 - 20%
Equipment	10%
Information Technology	33%
Display Galleries	7 - 13%
Furniture and Fittings	20%
Motor Vehicles	20%

## INVESTMENTS

Bank deposits and investment funds are valued at current market value. Investment properties are revalued annually, recorded at net current value and are not depreciated. All revaluations are taken directly to the Statement of Financial Performance.

## RESEARCH AND DEVELOPMENT

Expenditure on research is written off to the Statement of Financial Performance in year incurred. Development expenditure is carried forward and amortised over the period of expected benefit.

## FOREIGN CURRENCY

Transactions denominated in foreign currencies are translated into the reporting currency using the exchange rate in effect at the transaction date. Foreign currency assets and liabilities are translated into New Zealand currency at the rates of exchange prevailing at year end. All gains and losses on translation are included in the Statement of Financial Performance.

## FINANCIAL INSTRUMENTS

Financial instruments in the Statement of Financial Position include cash and bank, investments, accounts receivable and accounts payable. The particular recognition methods adopted are disclosed in the individual statements associated with each item.

## CASH FLOW

The Statement of Cash Flow is prepared exclusive of GST, which is consistent with the method used in the Statement of Financial Performance.

Definitions of the term used in the statement of cash flows:

Cash includes coins and notes, demand deposits and other highly liquid investments readily convertible into cash and includes at call borrowings such as bank overdrafts, used by the Museum as part of day-to-day cash management.

Investing activities are those activities relating to the acquisition and disposal of current and non-current investments and other non-current assets.

Operating activities include all transactions and other events that are not investing or financing activities.

## GOODS AND SERVICES TAX (GST)

All items in the Statement of Financial Performance are stated exclusive of GST.

All items in the Statement of Financial Position are stated exclusive of GST, except receivables and payables, which include GST invoiced.

## COMPARATIVE FIGURES

Comparative figures have been restated to align with the current Annual Plan.

## CHANGES IN ACCOUNTING POLICIES

There have been no changes in accounting policy during the year.

# STATEMENT OF FINANCIAL PERFORMANCE

FOR THE YEAR ENDED 30 JUNE 2006

		ACTUAL 2006 \$000s	ANNUAL PLAN 2006 \$000s	ACTUAL 2005 \$000s
	NOTE			
<b>REVENUE</b>				
Local authorities levy		16,330	16,330	14,554
Interest revenue		974	450	751
Grant revenue		296	309	313
Admissions		1,245	1,340	1,267
Commercial operations		2,307	2,285	2,420
Sundry income		378	824	407
Special exhibitions		599	250	189
<b>Total revenue</b>		<b>22,129</b>	<b>21,788</b>	<b>19,901</b>
<b>EXPENSES</b>				
Cost of maintenance and management activities	1	20,036	19,245	19,078
Cost of development activities	1	1,466	2,143	322
<b>Total expenses</b>	<b>2</b>	<b>21,502</b>	<b>21,388</b>	<b>19,400</b>
<b>Operating surplus</b>		<b>627</b>	<b>400</b>	<b>501</b>
<b>SPECIAL PURPOSES ACTIVITIES</b>				
<b>Revenue</b>				
Interest		1,368	900	1,387
Sundry income		389	76	55
Unrealised increase(decrease) in investment values		1,933		27
Increase in value of investment property				120
Rent		94	92	101
		<b>3,784</b>	<b>1,068</b>	<b>1,690</b>

	NOTE	ACTUAL 2006 \$000s	ANNUAL PLAN 2006 \$000s	ACTUAL 2005 \$000s
<b>Expenses</b>				
Allocation to operating		30	30	30
Operating expenses		14	12	105
Heritage assets expensed		92		
		<b>136</b>	<b>42</b>	<b>135</b>
<b>Transfer to Special Purposes Equity</b>				
		<b>3,648</b>	<b>1,026</b>	<b>1,555</b>
<b>Surplus before capital expenditure related transactions</b>				
		<b>4,275</b>	<b>1,426</b>	<b>2,056</b>
Grand Atrium project fund raising	3	9,596	11,709	13,547
Airconditioning settlement				1,137
Earthquake Commission Volcanoes sponsorship		300	300	300
		<b>9,896</b>	<b>12,009</b>	<b>14,984</b>
<b>Net Surplus</b>				
		<b>14,171</b>	<b>13,435</b>	<b>17,040</b>
Allocated to :				
General equity		10,523	12,409	15,485
Special purposes equity		3,648	1,026	1,555
		<b>14,171</b>	<b>13,435</b>	<b>17,040</b>

The accompanying notes and accounting policies form part of these financial statements.



# STATEMENT OF FINANCIAL POSITION

AS AT 30 JUNE 2006

	NOTE	ACTUAL 2006 \$000s	ACTUAL 2005 \$000s
<b>CURRENT ASSETS</b>			
Cash and bank		1,052	461
Short term investments		7,047	5,909
Short term investments-restricted		13,409	25,845
Accounts receivable	5	1,107	598
Inventories	6	323	331
		<b>22,938</b>	<b>33,144</b>
<b>CURRENT LIABILITIES</b>			
Accounts payable	7	5,277	3,808
<b>WORKING CAPITAL</b>			
Working Capital		17,661	29,336
<b>NON CURRENT ASSETS</b>			
Investments-restricted	8	8,847	6,914
Property plant and equipment	9	73,212	49,299
		<b>82,059</b>	<b>56,213</b>
		<b>99,720</b>	<b>85,549</b>
<b>REPRESENTED BY PUBLIC EQUITY MADE UP OF:</b>			
General Equity	10	75,465	55,461
Special Purposes Equity	11	24,255	30,088
		<b>99,720</b>	<b>85,549</b>

For and on behalf of the Trust Board:

D Hill, Chairman, 7 September 2006

T L R Wilson, Director, 7 September 2006

The accompanying notes and accounting policies form part of these financial statements.

# STATEMENT OF MOVEMENTS IN EQUITY

FOR THE YEAR ENDED 30 JUNE 2006

	NOTE	ACTUAL 2006 \$000s	ACTUAL 2005 \$000s
Equity at 1 July 2005		85,549	68,509
Transfer from Statement of Financial Performance		14,171	17,040
<b>EQUITY AT 30 JUNE 2006</b>		<b>99,720</b>	<b>85,549</b>

The accompanying notes and accounting policies form part of these financial statements.

# STATEMENT OF CASH FLOWS

FOR THE YEAR ENDED 30 JUNE 2006

	NOTE	ACTUAL 2006 \$000s	ACTUAL 2005 \$000s
<b>CASH FLOWS FROM OPERATING ACTIVITIES</b>			
<b>Cash was provided from:</b>			
Levy on local authorities		16,330	14,554
Receipts from operations		5,376	5,336
Interest received		2,105	1,900
		<b>23,811</b>	<b>21,790</b>
<b>Cash was applied to:</b>			
Payments to suppliers		7,950	8,357
Payments to employees		7,398	6,079
Payments relating to special purposes		136	1,087
		<b>15,484</b>	<b>15,523</b>
<b>Net Cash Flow from Operating Activities</b>	<b>15</b>	<b>8,327</b>	<b>6,267</b>
<b>CASH FLOWS FROM INVESTING ACTIVITIES</b>			
<b>Cash was provided from:</b>			
Grand Atrium project fundraising		9,636	13,547
Other capital funds			1,437
Dividends & bequests received		45	55
Sale of investments		11,298	
		<b>20,979</b>	<b>15,039</b>
<b>Cash was applied to:</b>			
Purchase of investments			6,842
Purchase of property plant and equipment		28,715	14,714
		<b>28,715</b>	<b>21,556</b>
<b>Net Cash Flow Used In Investing Activities</b>		<b>(7,736)</b>	<b>(6,517)</b>
<b>NET (DECREASE) INCREASE IN CASH HELD</b>			
		<b>591</b>	<b>(250)</b>
Opening cash balance		461	711
<b>Closing Cash Balance</b>		<b>1,052</b>	<b>461</b>
Represented by: Cash and bank		1,052	461
<b>Closing Cash Balance</b>		<b>1,052</b>	<b>461</b>

The accompanying notes and accounting policies form part of these financial statements.

# NOTES TO THE FINANCIAL STATEMENTS

FOR THE YEAR ENDED 30 JUNE 2006

1 Costs of Activities	ACTUAL 2006 \$000s	ANNUAL PLAN 2006 \$000s	ACTUAL 2005 \$000s
<b>MAINTENANCE AND MANAGEMENT</b>			
<b>COLLECTION MANAGEMENT</b>			
Registration and conservation	1,066	1,122	963
Curatorial	1,750	1,711	1,591
Library	411	414	384
Corporate services	1,206	964	1,082
Occupancy	368	327	329
Depreciation	476	515	492
<b>Total Collection Management</b>	<b>5,277</b>	<b>5,053</b>	<b>4,841</b>
<b>PUBLIC PROGRAMMES</b>			
Education and publications	1,024	923	1,153
Exhibitions	1,316	1,084	1,045
Marketing	1,035	980	995
Membership	26	52	
Commercial operations	1,835	1,918	1,855
Admissions	463	393	337
Corporate services	1,369	1,117	1,326
Occupancy	2,154	1,964	1,972
Depreciation	2,853	3,092	2,949
<b>Total Public Programmes</b>	<b>12,075</b>	<b>11,523</b>	<b>11,632</b>
<b>WAR MEMORIAL</b>			
Activities	90	90	90
Corporate services	63	51	54
Occupancy	1,104	982	986
Depreciation	1,427	1,546	1,475
<b>Total War Memorial</b>	<b>2,684</b>	<b>2,669</b>	<b>2,605</b>
<b>TOTAL MAINTENANCE AND MANAGEMENT COSTS</b>	<b>20,036</b>	<b>19,245</b>	<b>19,078</b>

## NOTES TO THE FINANCIAL STATEMENTS FOR THE YEAR ENDED 30 JUNE 2006 (continued)

1 Costs of Activities <small>CONTINUED</small>	ACTUAL 2006 \$000s	ANNUAL PLAN 2006 \$000s	ACTUAL 2005 \$000s
<b>DEVELOPMENT</b>			
<b>COLLECTION MANAGEMENT</b>			
Registration and conservation		20	
Curatorial	94	85	
Library	62	50	
Corporate services	223	271	109
Occupancy	15	14	
Depreciation		50	
<b>Total Collection Management</b>	<b>394</b>	<b>490</b>	<b>109</b>
<b>PUBLIC PROGRAMMES</b>			
Education and publications	221	140	75
Exhibitions	120	138	
Marketing	25	25	
Membership	11	10	
Commercial operations	244	399	
Corporate services	258	314	133
Occupancy	90	87	
Depreciation		297	
<b>Total Public Programmes</b>	<b>969</b>	<b>1,410</b>	<b>208</b>
<b>WAR MEMORIAL</b>			
Activities	46	37	
Corporate services	12	14	5
Occupancy	45	43	
Depreciation		149	
<b>Total War Memorial</b>	<b>103</b>	<b>243</b>	<b>5</b>
<b>TOTAL DEVELOPMENT COSTS</b>	<b>1,466</b>	<b>2,143</b>	<b>322</b>

## NOTES TO THE FINANCIAL STATEMENTS FOR THE YEAR ENDED 30 JUNE 2006 (continued)

2 Components of Surplus	ACTUAL	ACTUAL	ACTUAL	ANNUAL PLAN	ACTUAL
	2006	2006	2006	2006	2005
	\$'000s	\$'000s	\$'000s	\$'000s	\$'000s
EXPENSES	MAINTENANCE MANAGEMENT	DEVELOPMENT	TOTAL		
Auditors' fees-financial statements	32		32	32	31
Auditors' fees-other services	6		6		
Advertising	613		613	600	562
Cleaning	321	40	361	293	289
Cost of Sales - trading activities	846		846	841	772
Electricity	383	30	413	514	435
Heritage assets written off (Note 4)	249		249	250	257
Insurance	413	6	419	484	415
Operating expenses	2,646	539	3,185	3,362	2,785
Professional fees	530	44	574	467	968
Rates	118		118	186	176
Remuneration	6,652	615	7,267	6,724	6,119
Rent	135	30	165	196	204
Repairs and maintenance	1,283	28	1,311	954	1,039
Special exhibitions	689	81	770	504	144
Telecommunications	158	6	164	112	104
Trust Board & Taumata-a-lwi fees & expenses	207		207	191	184
<b>Total Expenses</b>	<b>15,281</b>	<b>1,419</b>	<b>16,700</b>	<b>15,710</b>	<b>14,484</b>
Buildings depreciation expense	263	47	310	500	215
Displays depreciation expense	2,440		2,440	2,700	2,654
Plant and equipment depreciation expense	2,052		2,052	2,448	2,047
<b>Total Depreciation Expense</b>	<b>4,755</b>	<b>47</b>	<b>4,802</b>	<b>5,648</b>	<b>4,916</b>
	<b>20,036</b>	<b>1,466</b>	<b>21,502</b>	<b>21,358</b>	<b>19,400</b>

## NOTES TO THE FINANCIAL STATEMENTS FOR THE YEAR ENDED 30 JUNE 2006 (continued)

<b>3 Grand Atrium project fundraising</b>	ACTUAL 2006 \$000's	ACTUAL 2005 \$000's
<b>Opening Balance</b>	<b>22,472</b>	<b>8,925</b>
NZ Government	4,711	4,711
ASB Bank Community Trust	2,795	6,137
Gibbs Family	100	
Lion Foundation	500	500
Portage Trust		300
Horrocks Sainsbury	200	
Southern Trust (donation returned)	50	(50)
B & S Picot	5	25
David Levene Charitable Trust	50	
Woolf Fisher Trust	100	
P H Masfen Charitable Trust	20	20
W A Stevenson & Sons Limited		500
Chisholm Whitney Family Charitable Trust	100	
Sky City Community Trust		450
Pelorous Trust		50
South Auckland Charitable Trust		20
Smith & Caughey		125
McConnell Family	20	20
Waitakere Licencing Trust		277
Museum Circle	460	125
Logan Campbell	25	
C & L Gregory Charitable Trust		20
Girardet		25
L M Massey Estate		5
Interest	460	287
	<b>9,596</b>	<b>13,547</b>
<b>CUMULATIVE FUNDS RAISED</b>	<b>32,068</b>	<b>22,472</b>

## NOTES TO THE FINANCIAL STATEMENTS FOR THE YEAR ENDED 30 JUNE 2006 (continued)

## 4 Heritage Assets Written Off

The Auckland Museum Trust Board has decided to continue its policy of writing off collection acquisitions and not attributing a monetary value to items gifted to the collection. This treatment is contrary to Financial Reporting Standard No.3 Accounting for Property, Plant and Equipment, which requires that collection purchases and the fair value of gifts be capitalised as property, plant and equipment.

FRS 3 has not been followed because the Board considers that the collection does not have the characteristics of property, plant or equipment.

Collection items have substantial intangible characteristics. The story behind an object is often more important than the object itself. Scientific collections have great research importance but little market value

With good conservation the life of an object or specimen is indefinite. Age usually increases the significance of an object rather than depreciating it. The collection is not like manufacturing plant, which is heavily used, wears out and is then replaced.

Usually gifts to the collection are unique items that have iconic status or are historic and irreplaceable or sacred to particular communities, with no market, so no financial value can or should be ascribed.

Museums in the USA and Canada do not capitalise their collections.

The effect of writing off collection purchases is shown in Note 2 as Heritage Assets Written Off. The costs of conserving the collection are shown in Note 1 Registration and conservation.

5 Accounts Receivable	ACTUAL	ACTUAL
	2006	2005
	\$000's	\$000's
Sundry debtors	484	217
GST receivable	398	242
Prepayments	225	139
	<b>1,107</b>	<b>598</b>

6 Inventories		
Museum store finished goods	323	331
	<b>323</b>	<b>331</b>

7 Accounts Payable		
Sundry creditors & accruals	4,351	2,996
Employee entitlements	752	621
Contract obligations	174	191
	<b>5,277</b>	<b>3,808</b>



## NOTES TO THE FINANCIAL STATEMENTS FOR THE YEAR ENDED 30 JUNE 2006 (continued)

8 Non Current Investments	ACTUAL 2005 \$000's	ACTUAL 2005 \$000's
NZ Assets Management Fund	7,767	5,834
Investment property	1,080	1,080
	<b>8,847</b>	<b>6,914</b>

The Vaile Trust investment property was valued at \$1,080,000 by DTZ Darroch Limited, valuers at 30 June 2006.

## 9 Property plant and equipment

Museum building (at cost)	22,414	16,008
Accumulated depreciation	(1,931)	(1,621)
	<b>20,483</b>	<b>14,387</b>
Displays (at cost)	27,840	26,347
Accumulated depreciation	(20,152)	(17,712)
	<b>7,688</b>	<b>8,635</b>
Plant and equipment (at cost)	19,527	16,955
Accumulated depreciation	(13,232)	(11,655)
	<b>6,295</b>	<b>5,300</b>
Capital work in progress (at cost)	<b>38,746</b>	<b>20,977</b>
<b>Total property plant and equipment</b>	<b>73,212</b>	<b>49,299</b>

The latest Statutory Valuation of the Museum Building is \$40,000,000 (September 2005). (Prior year \$37,850,000).

## 10 General Equity

Opening balance	55,461	43,275
Transfer from Financial Performance Statement	10,523	15,387
Transfer of capital expenditure from special purposes equity	14,634	1,726
Transfer of depreciation levy to asset replacement reserve	(5,153)	(4,927)
<b>Closing balance</b>	<b>75,465</b>	<b>55,461</b>

## NOTES TO THE FINANCIAL STATEMENTS FOR THE YEAR ENDED 30 JUNE 2006 (continued)

11 Special Purposes Equity	BALANCE 2005	LEVIES, GIFTS & BEQUESTS	INVESTMENT NET INCOME	OPERATING EXPENDITURE	CAPITAL EXPENDITURE	BALANCE 2006
	\$000's	\$000's	\$000's	\$000's	\$000's	\$000's
<b>TRUSTS</b>						
Levingston Cooke Family Bequest	1,867	45	537	53		2,396
Edward Earle Vaile Trust Fund	1,116		94	40		1,170
The Waldo Heap Bequest	341		98	23		416
AWMME&B Omnibus Trust	28		8			36
Life Members' Subscription Trust	89		26	4		111
Auckland Museum Endowment Act	34		10			44
Bertha Wilson-cinematography	5		1			6
Others under \$10,000	20		7			27
<b>RESTRICTED GIFTS &amp; BEQUESTS</b>						
Nancy Bamford bequest	513		148	3		658
Others under \$10,000	42		11			53
<b>GIFTS &amp; BEQUESTS SUBJECT TO WISHES</b>						
A G W Dunningham bequest	92		26			118
C Whitney Trust	31		9			40
Memorial Hall donations	69		20			89
<b>RESERVES</b>						
Asset replacement/Spedding	2,332		1,013			3,345
Catherine E Tong reserve	65		19			84
Refurbishment Stage 2 reserve	7,125	3,928			11,053	
Asset replacement reserve	15,094	1,225	1,266		3,581	14,004
Perpetual maintenance reserve	611		51			662
Acquisitions reserve	269		22	13		278
Exhibition reserve	345	344	29			718
	30,088	5,542	3,395	136	14,634	24,255

## NOTES TO THE FINANCIAL STATEMENTS FOR THE YEAR ENDED 30 JUNE 2006 (continued)

12 Commitments under Non-cancellable Leases	ACTUAL 2005 \$000's	ACTUAL 2005 \$000's
Less than 1 year	80	160
Between 1 and 2 years	-	80
Between 2 and 5 years		
	80	240

13 Capital Commitments		
Grand Atrium project	11,589	18,426
Equipment	2,380	1,333
	13,969	19,759

## 14 Contingent Liabilities

The Museum has a contingent liability in respect of the Accident Compensation Commission's (ACC) residual claims levy. The levy will be payable annually from May 1999 for up to 15 years. The Museum's future liability is a function of ACC's unfunded liability for past claims and future payments to employees by the Museum.

At 30 June 2006 there were no other contingent liabilities (2005 nil).

## NOTES TO THE FINANCIAL STATEMENTS FOR THE YEAR ENDED 30 JUNE 2006 (continued)

15 Reconciliation of Surplus for the Year to Net Cash Flow from Operating Activities	ACTUAL 2005 \$000's	ACTUAL 2005 \$000's
<b>Surplus before Capital Transactions</b>	4,275	2,056
<b>Add non-cash items:</b>		
Depreciation	4,802	4,916
Investment revaluations and reinvestments	(1,933)	(147)
	<b>2,869</b>	<b>4,769</b>
<b>Add (less) movements in working capital:</b>		
(Increase) / decrease in accounts receivable	(209)	388
(Increase) / decrease in inventory	8	(13)
(Decrease) / increase in accounts payable	1,469	(878)
	<b>1,268</b>	<b>(503)</b>
<b>Add (less) items initially classified as financing/investing related activity:</b>		
Grand Atrium project fund raising costs	(40)	
Dividend	(45)	(55)
	<b>(85)</b>	<b>(55)</b>
<b>Net Cash Flow from Operating Activities</b>	<b>8,327</b>	<b>6,267</b>

## 16 Segment Information

The Auckland War Memorial Museum is governed by the Auckland War Memorial Museum Act 1996 and operates primarily in the Auckland Region.

## 17 Financial Instruments

The nature of activity and management policies with respect to financial instruments is:

<b>1 Currency risk</b>	The Museum has exposure to foreign exchange risk as a result of transactions denominated in foreign currencies arising from investing activities. Foreign exchange risks on investment funds are hedged in the funds by the fund manager as considered necessary. No cover was in place at 30 June 2006.
<b>2 Interest rate risk</b>	Management monitors interest rates and locks in fixed rates where appropriate. Interest rates on bank deposits range from 2% to 7.5%
<b>3 Credit risk</b>	In the normal course of its business, the Museum incurs credit risk from trade debtors and transactions with financial institutions. The Museum has a concentration of risk with respect to funds on deposit at financial institutions. The Museum minimises this risk by placing funds on deposit with financial institutions which have been credited an "AA" rating by Standard and Poors.
<b>4 Fair values</b>	The carrying value of cash and liquid deposits, debtors, trade creditors, other and sundry debtors and creditors, is equivalent to their fair value.

# AUDIT REPORT

## TO THE AUCKLAND MUSEUM TRUST BOARD

We have audited the financial statements on pages 12 to 21 and 47 to 63. The financial statements provide information about the past financial performance and service performance of the Auckland War Memorial Museum and its financial position as at 30 June 2006. This information is stated in accordance with the accounting policies set out on pages 48 and 49.

### TRUST BOARD RESPONSIBILITIES

The Trust Board is responsible for the preparation, in accordance with New Zealand law and generally accepted accounting practice, of financial statements which give a true and fair view of the financial position of the Auckland War Memorial Museum as at 30 June 2006 and of the results of its operations and cash flows and service performance for the year ended 30 June 2006.

The Auckland War Memorial Museum Act 1996 also requires the Board to report the performance targets and other measures by which the Museum's performance can be judged in relation to its objectives.

### AUDITORS' RESPONSIBILITIES

It is our responsibility, in terms of Section 28 of the Auckland War Memorial Museum Act 1996, to express to you an independent opinion on the financial statements including the statement of service performance presented by the Trust Board.

### ANNUAL PLAN

The Annual Plan 2006 information within the financial statements has been agreed to the Auckland War Memorial Museum's Annual Plan document prepared by the Trust Board in terms of Section 22 of the Auckland War Memorial Museum Act 1996.

### BASIS OF OPINION

An audit includes examining, on a test basis, evidence relevant to the amounts and disclosures in the financial statements. It also includes assessing:

- the significant estimates and judgements made by the Trust Board in the preparation of the financial statements, and
- whether the accounting policies are appropriate to the Auckland War Memorial Museum's circumstances, consistently applied and adequately disclosed.

We conducted our audit in accordance with New Zealand Auditing Standards. We planned and performed our audit so as to obtain all the information and explanations which we considered necessary in order to provide us with sufficient evidence to give reasonable assurance that the financial statements are free from material misstatements, whether caused by fraud or error. In forming our opinion we also evaluated the overall adequacy of the presentation of information in the financial statements.

Other than in our capacity as auditors, and the provision of accounting advice, we have no other relationship with or interests in the Auckland War Memorial Museum.

## QUALIFIED OPINION

We have obtained all the information and explanations that we have required.

As stated in Note 4 on page 59, the Auckland War Memorial Museum has not recognised its collection acquisitions at their cost and has not attributed a monetary value to gifts to the collection. This is a departure from applicable Financial Reporting Standard No 3 – Accounting for Property, Plant and Equipment, which requires that an item of property, plant and equipment must initially be recognised at its cost. It also requires that donated items of property, plant and equipment must be recognised at their fair value at the date of acquisition with the amount of the donation received recognised in the Statement of Financial Performance.

The Auckland War Memorial Museum has not calculated the financial effect of this departure from the applicable Financial Reporting Standard. The cost of collection acquisitions expensed in the current year was \$341,000 (2005: \$257,000). Had the Auckland War Memorial Museum adopted this standard, the effect on the financial statements would have been to increase the Net Surplus and equity by \$341,000 before depreciation charges. The cumulative carrying value of property, plant and equipment would have likewise been increased by \$1,478,000, including the cost of collection acquisitions from 1 July 2002, before depreciation charges. There are no practical audit procedures that could be performed to determine the current and historical depreciation expense for such collection acquisitions.

There are no practical audit procedures that could be performed to determine the fair value of donated items of property, plant and equipment.

In our opinion, except for the effect of the departures from applicable Financial Reporting Standard No 3 as outlined above:

- \* proper accounting records have been kept by the Auckland War Memorial Museum as far as appears from our examination of those records;
- \* the financial statements of the Auckland War Memorial Museum on pages 12 to 21 and 47 to 63:
  - ~ comply with generally accepted accounting practice in New Zealand;
  - ~ give a true and fair view of the financial position of the Auckland War Memorial Museum as at 30 June 2006, the results of its operations and cash flows for the year ended on that date and the service performance achievements in relation to the performance targets and other measures adopted on that date.

Our audit was completed on 7 September 2006 and our qualified opinion is expressed as at that date.



AUCKLAND, NEW ZEALAND  
CHARTERED ACCOUNTANTS

# MUSEUM STAFF

## Appendix 1

### COLLECTION MANAGEMENT

Oliver Stead

### CONSERVATION AND REGISTRATION

Annie Hall  
 Craig Collier  
 Janine Leighton  
 Jeremy Uden  
 Julia Greeson  
 Laura Vodanovich  
 Merv Hutchinson  
 Sally August  
 Sara Perrett  
 Chris Jones  
 Grace Cheng  
 Heath King  
 Meredith Rimmer  
 Olivia Cranstone

### HUMAN HISTORY

Awhina Rawiri  
 Barbara Spiers  
 Catherine Jehly  
 Chanel Clarke  
 Finn McCahon-Jones  
 Fuli Pereira  
 Gordon Maitland  
 John Tepu  
 Kath Prickett  
 Louis Le Vailliant  
 Roger Neich  
 Rose Young  
 Shaun Higgins  
 Nigel Prickett

### LIBRARY SERVICES

Alison Taylor  
 Bruce Ralston  
 Diane Gordon  
 Gabrielle Fortune  
 Geraldine Warren  
 Janeen Love

### LIBRARY SERVICES CONTINUED

Jennie Philson  
 Martin Collett  
 Phillip Allen  
 Ramola Prasad  
 Susan Wallace  
 Christina Tuitubou  
 Julie Senior  
 Jonathan Longstaff

### PUBLIC PROGRAMMES

James Dexter  
 Bevan Chuang  
 Louise Small

### EXHIBITIONS

Amanda White  
 Graham Soughtton  
 Hannah Kerr  
 Krzystof Pfeiffer  
 Max Riksen  
 Nick Eagles  
 Penelope Morrison

### DISCOVERY CENTRE

Ariane Craig-Smith  
 Glenys Stace  
 Venissa Freesir  
 Virgil Evetts

### EDUCATION

Diane Northcott  
 Florence Hassall  
 Jo Lees  
 Kipa Rangiheua  
 Leilani Salesa  
 Peter Millward  
 Zarah Burnett  
 Diane Blomfield  
 Lisa Hannan  
 Jorie Zwart  
 Leonie Garmaz

**VISITOR SERVICES**

Kae Kinnell  
 Karla Johnson  
 Margaret Most  
 Maureen Jones  
 Michelle Nickolls  
 Rebecca Reid  
 Vasiti Camaibau  
 Robyn Thorburn  
 Alison Lambert

**MARKETING**

Margi Mellsop  
 Amanda Maclaren  
 Kulvinder Singh

**SHOP**

Colleen Mullin  
 Judith Brooke  
 Lorna Carter  
 Sarah Galbraith  
 Victoria Lai

**TOURISM AND EVENTS**

Bruce Kenny  
 Leanne Castle

**NATURAL HISTORY**

Brian Gill  
 Ewen Cameron  
 Mei Nee Lee  
 Rosemary Gilbert  
 Todd Landers  
 Wilma Blom  
 Ramola Prasad  
 John Early

**FINANCE AND FACILITIES**

Andrew Mayo  
 Cindy Pocock-Smith  
 Denis Riseborough  
 Frances Boyce  
 Suliana Jacobsen  
 Nicholas Van den Berg  
 Metuakore Teokoitu  
 Naibolioni Vunivesilevu  
 Doris Tuhoro  
 Neil Osborne  
 Ian Crawshaw  
 Jamie Moore  
 John Adams  
 John Glen  
 Jonathan Curwain  
 Kelly Bewley  
 Lisa Tollich  
 Peter Fillet  
 Rob Lagden  
 Robert Bell  
 Roy Boxall  
 Shane Jacob  
 Sharon Tuhe  
 Stephen Brookbanks  
 Sue Mestrom  
 Wayne Fergusson  
 Andrew Jary

**HUMAN RESOURCES**

Carol Abernethy  
 Lawton Hakaraia

**MAORI VALUES**

Nicola Railton  
 Paul Tapsell

**FINANCE**

Helen Phillips  
 John Cowan  
 Katie Liu  
 Les Fleming

**CORPORATE SERVICES DEVELOPMENT**

Amanda Sutherland  
 Margaret Spencer  
 Lane Harris

**GALLERY RENEWAL**

Malcolm Ryan

**DIRECTORS OFFICE**

Rodney Wilson  
 Denise Laurie



# MUSEUM VOLUNTEERS

## Appendix 2

### APPLIED ARTS

Margaret Oldham  
Paul Brobbel  
Vivien Caughley  
Rigel Sorzano  
Martin Ma  
Fiona Connor  
Alwynne Crowsen  
Georgina Fell  
Tom Wu  
Steph Hogan  
Stacey Ogg  
Angela Scott

### ARMOURY

Jeanine Moss  
Phil Lascelles  
Christopher Blackmore  
John Ross  
Paul Hobbs  
Peter Thompson  
Andy Tolich  
Jim Buckland  
Geoffery J Burton  
Judith Hislop  
Jim H Brown  
Donald M Jamieson  
Donald E Renner  
Bill Senior  
Patricia Stroud  
Marjorie E Traill  
Jim West  
Kato Pero

### BOTANY

Joan Dow  
Christine Ashton  
Meryl Wright  
Pat Jenner  
Joshua Salter  
Naomi Lorimer

### DISCOVERY CENTRE

Alma Turner

### EDUCATION

Eric Liu

### ENTOMOLOGY

David Ensor  
Robert R Herd  
Garth Allen

### GALLERY EXPLAINER

Emmy Hodgson

### GEOLOGY

Peter Stanes

### GUIDES

Bonnie K Chuang  
Alison Barnett  
Anna Ridler  
Lyndsay Wyatt  
Andrew Kim  
Sarah Robertson  
Robin Hale  
Patricia Hall  
Kimberly Kim  
Alette Mead  
Kim Smith  
Barry Ensor  
Heni Goldsmith  
George Dibley  
Dianne Aubin  
Marie Burman  
Allan C Mutch  
Suzanne B Boyes  
Sheila Gray  
Colleen Williams  
John L Robertson  
Lola C Gregory  
Patricia Stroud  
John Hammond  
Michael Glass  
John Michaels  
Michael J Penn

**HISTORY**

Katherine Dennis  
 Joshua Liang  
 Sian Northfield  
 Lisa Rogers

**INFO DESK**

Roselle Rasmussen  
 Kim Poole  
 Margaret Foote  
 Helen Clark  
 Cynthia Dove  
 Allison Tang  
 Rachel Wang  
 Tiffany Tang  
 Nathalie Gottstein-Bolstadt  
 Sara Williams  
 Mary Notton  
 Anna Biazik  
 Colleen Sweeney  
 Satsuki Teramura  
 Patricia Hall  
 Margaret Bain  
 Robyn Judd  
 Diane Kan  
 Jewele Mcleod  
 Angelica Bell  
 Lloyd Walker  
 Anna Ridler  
 Bob Keston  
 Marion Wood  
 Tom A Matthews  
 Sue Cross  
 Audrey Maddox  
 Sheila Weight  
 Suzanne B Boyes  
 Leola R Melles  
 Allan C Mutch  
 Bill G Griffiths  
 Jocelyn Hitchcock  
 Margaret Dale  
 Carmen Savage  
 Alma Turner  
 Anna Ferguson  
 Adrian Hart  
 Monica Hunt

**INFO DESK CONTINUED**

Santwona Bhattu  
 Owen Diggelmann  
 Pauline Fisher  
 Robin Flynn  
 Marguerite Durling  
 Annette Bierre  
 Gay Croker  
 William Tucker  
 Susan Hawkeswood  
 Daphne M French  
 Jill Hodgkinson  
 Douglass Macalister  
 Jan C Truscott  
 Beverley J Batkin  
 Kirsten Bojsen-Moller  
 Priscilla Pitcher  
 Elizabeth Powell  
 Sarah Robertson  
 John Hammond  
 Irena Hodgson  
 Stella Isbey  
 Ian Kendall  
 Betty Maddock  
 John Michaels  
 Clio Chiu  
 Caroline De Long  
 Shirley Brabant

**LAND VERTEBRATES**

Eleanor Duff  
 Michael J Taylor  
 Kathleen Barrow

**LIBRARY**

Joyce Harvey  
 Patricia Bond  
 Lynne Florence  
 Megan Williams  
 Kimberley Loney  
 Matthew Notton  
 Aisha Habir  
 Barbara Glenie

**MARINE**

Megan Williams  
 Murielle Rabone  
 Douglas Charles Snook  
 Jane Fowler  
 Owen D Lee  
 Leon A Lee  
 Fiona Thompson  
 Margaret S Morley  
 Noel Gardner

**MATAPUNA**

Kathleen Barrow  
 Bill G Griffiths  
 Alma Turner  
 Eleanor Duff  
 Audrey Maddox  
 William Tucker  
 Susan Hawkeswood  
 GA Williams

**NATURAL HISTORY**

Jay Yang  
 Jeong Min Yoon

**PICTORIAL**

Belinda Burgess  
 Megan Harvey  
 Alex Burton  
 Jan E Hawkins  
 Joan G Brock

**RSA**

Douglas Clark  
 Malcolm Courtney  
 Grayson C Finlayson  
 Richard Ashton  
 Leslie Hughes  
 Ron Johnstone  
 Warren Schrader

**TE KAKANO**

Juanita Craig  
 Michelle Fox  
 Rose Rawiri

# MUSEUM MEDAL RECIPIENTS

## Appendix 3

**Dr Janet Davidson**

Fellow of the Auckland War Memorial Museum

**Dr Lucy Cranwell Smith**

Fellow of the Auckland War Memorial Museum

**Shelia Weight**

Companion of the Auckland War Memorial Museum

**Keith Wise**

Associate Emeritus of the Auckland War Memorial Museum

**Trevor Bayliss**

Associate Emeritus of the Auckland War Memorial Museum

**Evan Graham Turbott**

Associate Emeritus of the Auckland War Memorial Museum

**Enid Evans**

Associate Emeritus of the Auckland War Memorial Museum

**Prof. John Morton**

Fellow of the Auckland War Memorial Museum

**Jeremy Salmond**

Fellow of the Auckland War Memorial Museum

**Dr Ranginui Walker**

Fellow of the Auckland War Memorial Museum

**Dr Lindo Ferguson**

Companion of the Auckland War Memorial Museum

**Rev. Dr Takutai Wikiriwhi**

Companion of the Auckland War Memorial Museum

**Mick Pendergrast**

Associate Emeritus of the Auckland War Memorial Museum

**Katrina Stamp**

Associate Emeritus of the Auckland War Memorial Museum

**Henare Te Ua**

Companion of the Auckland War Memorial Museum

**John M Stacpoole**

Fellow of the Auckland War Memorial Museum

**Lorraine Wilson**

Companion of the Auckland War Memorial Museum

**Lyndy Sainsbury**

Companion of the Auckland War Memorial Museum

**William Laxon**

Companion of the Auckland War Memorial Museum

# INSTITUTE COUNCIL AND MUSEUM CIRCLE

## Appendix 4

### INSTITUTE COUNCIL

**President**

Michael Rowe

**Councillors**

Bruce Bolland

Graham Foster

Philip Heath

Eric Keys

Peter McConnell

Owen Ormsby

Stuart Vogel

Maureen Jones

Kae Kinnell

**Staff Representatives**

Bruce Ralston

Colleen Mullin

**Administrator**

Margaret Spencer

### MUSEUM CIRCLE

**Patron**

Sir Edmund Hillary

**Trustees**

Lyndy Sainsbury

James Wallace

Peter Webb

Anna Nathan

David Nicoll

**Committee**

Anna Bidwell

Nicola Reid

John Leaning

**Treasurer**

Peter Hays

**Development Manager**

Rozelle Edwards

# STAFF PUBLICATIONS 2005-2006

## Appendix 5

### B

BRAGGINS, J.E.

2006. The green kingdom: ferns and liverworts. Pp.77-88. In: Harvey, B. & T. (eds), *The Variety of Life. The Waitakere Ranges*. Waitakere Ranges Protection Society Inc., Waitakere City.

### C

CAMERON, E.K.

2005. Regenerating bush, northern bank of the Orewa River. *Auckland Botanical Society Journal* 60(2): 63-66.

2005. Flora and fauna of two islets at Opoutere, southeast Coromandel Peninsula. *Auckland Botanical Society Journal* 60(2): 97-102.

2005. Vegetation and flora of Claude Stream Valley and Hogs' Hill Bush, Whitford, southeast Auckland. *Auckland Botanical Society Journal* 60(2): 107-114.

2005. New Zealand geographical limits of native vascular plant species in the Auckland region: past & present. *Auckland Botanical Society Journal* 60(2): 123-129.

2005. Auckland Museum Herbarium (AK) report: 1 July 2004 to 30 June 2005. *New Zealand Botanical Society Newsletter* 81: 18-20.

2006. The Whatipu sands, a changing habitat. Pp.194-202. In: Harvey, B. & T. (eds), *The Variety of Life. The Waitakere Ranges*. Waitakere Ranges Protection Society Inc, Waitakere City.

CAMERON, E.K.; BELLINGHAM, P.J.

2005. Vascular flora of Rakitu (Arid Island): additions and comments. *Auckland Botanical Society Journal* 60(2): 102-107.

CAMERON, E.K.; DE LANGE, P.J.

2005. Vegetation and vascular flora of southern Ponui Island, Hauraki Gulf - a return visit. *Auckland Botanical Society Journal* 61(1): 3-14.

CAMERON, E.K.; DE LANGE, P.J.; PERRIE, L.R.; BROWNSEY, P.J.; CAMPBELL, H.J.; TAYLOR, G.A.; GIVEN, D.R.; BELLINGHAM, R.M.

2005. A new location for the Poor Knights spleenwort (*Asplenium pauperequitum*, Aspleniaceae) on The Forty Fours, Chatham Islands, New Zealand. *New Zealand Journal of Botany* 44: 199-209.

CAMERON, E.K.; WRIGHT, A.E.

2006. Takaka Hill. In: Wilcox, M.D. (ed.), Golden Bay, North-west Nelson. *Auckland Botanical Society Journal* 61(1): 26-27.

CLARKE, C.

2006. Witches, writers and whalers: a New England adventure in Salem. *Te Ara. Journal of Museums Aotearoa* 31(1): 47-49.

**D** DENNIS, T.E.; LANDERS, T.; LAUBE, P.; FREEMAN, R.; FORER, P.; GUILFORD, T.; WALKER, M.

2006. Animal behaviour in the high-resolution spatiotemporal domain [Abstract of conference paper]. Australasian Society for the Study of Animal Behaviour, Macquarie University, Sydney. [<http://www.assab.org/>]

**E** EAGLE, M.K.; GILL, B.J.; GRANT-MACKIE, J.A.

2005. Pliocene bird bones from Pitt Island, Chatham Islands, New Zealand. *Records of the Auckland Museum* 42: 67-73.

**G** GARDNER, R.O.

2005. Field trip: Upper Nihotupu Valley. *Auckland Botanical Society Journal* 60(2): 88.

2005. Book review: Ocean shores to desert dunes: the native vegetation of New South Wales and the ACT. *Auckland Botanical Society Journal* 60(2): 166-167.

2006. Identification of some native members of Epacridaceae by their leaves. *Auckland Botanical Society Journal* 61(1): 62-63.

2006. *Fatoua pilosa* (Moraceae) weedy in New Zealand. *Auckland Botanical Society Journal* 61(1): 65-66.

2006. Significance for Dummies: a case study from the southern end of Lake Taupo. *Auckland Botanical Society Journal* 61(1): 69-72.

GILL, B.J.

2005. Hihi has the last haha. *Southern Bird* 23: 2.

2005. Records of the Auckland Museum - 75 years of publication, 1930-2005. *Te Ara. Journal of Museums Aotearoa* 30(2): 37-38.

2006. Post-mortem examination of New Zealand pigeons (*Hemiphaga novaeseelandiae*) from the Auckland area. *New Zealand Journal of Zoology* 33(1): 31-37.

2006. Preface. Pp. 1-2. In: Foote, H. *The Feathered Drawer. A Collection of Paintings Based on Ornithological Specimens from the Auckland War Memorial Museum* [exhibition catalogue].

2006. Arctic anniversary. *Museum Quarterly* 106: 5.

GILL, B.J.; GRANT-MACKIE, J.A.; HAYES, B.

2005. A Middle Pleistocene goose bone (*Anserinae: Cnemiornis*) from Hawke's Bay, New Zealand. *Records of the Auckland Museum* 42: 75-79.

## H

HALL, A.

2004. A case study on the ethical considerations for an intervention upon a Tibetan religious sculpture. *The Conservator* 28: 66-73.

HAYWARD, B.W.; GRENFELL, H.R.; SABAA, A.T.; CARTER, R.; COCHRAN, U.; LIPPS, J.; SHANE, P.R.; MORLEY, M.S.

2006. Micropalaeontological evidence of large earthquakes in the past 7200 years in southern Hawke's Bay, New Zealand. *Quaternary Science Reviews* 25: 1186-1207.

HAYWARD, B.W.; GRENFELL, H.R.; SABAA, A.T.; MORLEY, M.S.; HORROCKS, M.

2006. Effect and timing of increased freshwater runoff into sheltered harbor environments around Auckland city, New Zealand. *Estuaries and Coasts* 29(2):165-182.

HAYWARD, B.W.; MORLEY, M.S.

2005. Zonation and biogeography of the intertidal biota of subantarctic Campbell and Auckland Islands, New Zealand. *Records of the Auckland Museum* 42: 7-33.

2006. The biodiversity of intertidal life. Pp. 203-209. In: Harvey, B. & T. (eds), *The Variety of Life. The Waitakere Ranges*. Waitakere Ranges Protection Society Inc., Waitakere City.

## L

LEE, M.N.; BENZIE, D.

2006. Lake Sylvester. In: Wilcox, M.D. (ed.), Golden Bay, North-west Nelson. *Auckland Botanical Society Journal* 61(1): 33-34.

## N

NEICH, R.

2005. Powaka whakairo: a third form of Maori treasure box. *Records of the Auckland Museum* 42: 49-66.

2006. Gilbert Mair as a cross-cultural mediator. Pp. 127-150. In: Tapsell, P. (ed.) *Maori Treasures of New Zealand*. Auckland Museum / David Bateman, Auckland.

## P

PRICKETT, N.

2005. Maori casualties of the First Taranaki War, 1860-61. *Records of the Auckland Museum* 42: 81-124.

## R

RALSTON, B.J.

2006. Lest we forget: electronic remembrance. Proceedings of the New Zealand Society of Genealogists, 2006 Conference, Hamilton, June 2-5, 2006: 222-225.

RUSSELL, J.C.; CAMERON, E.K.; MacKAY, J.W.B.; DUDLEY, J.L.; CLOUT, M.N.

2006. Ecological Survey of Motukaraka (Flat Island), Beachlands, Auckland. *Auckland Botanical Society Journal* 61(1): 57-61.

## S

STANLEY, R.; DE LANGE, P.J.; CAMERON, E.K.

2005. Auckland Regional Threatened & Uncommon vascular plant list. *Auckland Botanical Society Journal* 60(2): 152-157.

SULLIVAN, J.J.; WILLIAMS, P.A.; CAMERON, E.K.; TIMMINS, S.M.

2005. People and time explain the distribution of naturalized plants in New Zealand. *Weed Technology* 18(5): 1330-1333.

## TAPSELL, P.

2005. Ohinemutu: seed of the Pacific. Pp. 27-39. In: *Heartlands*. Penguin Books, Wellington.

2006. Taonga, marae, whenua - negotiating custodianship: a Maori tribal response to the Museum of New Zealand. Pp. 86-99. In: Coombes, A.E. (ed.) *Rethinking Settler Colonialism*. Manchester University Press, Manchester.

2006. *Ko Tawa: Matariki. 19-month calendar: June 2006 - December 2007. Matariki Maramataka: Pipiri 2006 - Hakihea 2007*. David Bateman, Auckland.

2006. *Ko Tawa: Maori Ancestors of New Zealand - Gilbert Mair Collection*. David Bateman, Auckland. 192 pp.

## VON KONRAT, M.J.; BRAGGINS, J.E.

2005. *Frullania wairua*, a new and seemingly rare liverwort species from Northland, New Zealand. *New Zealand Journal of Botany* 43: 885-893.

## VON KONRAT, M.J.; BRAGGINS, J.E.; ASAKAWA, Y.; TOYOTA, M.

2006. *Frullania chevalieri* (Jubulaceae) in New Zealand with a reassessment of *Schusterella*. *The Bryologist* 109: 141-156.

## WHITTER, D.P.; PINTAUD J-C.; BRAGGINS J.E.

2005. The gametophyte of *Lycopodium deuterodensum* - Type II or I. *American Fern Journal* 95: 22-29.

## WILLIAMS, P.A.; CAMERON, E.K.

2006. Creating gardens: the diversity and progression of European plant introductions. Pp. 33-47. In: Allen, R.B; Lee, W.G. (eds), *Biological Invasions of New Zealand*. Springer-Verlag, Berlin Heidelberg.



# SPONSORS

Auckland Museum would like to thank the following charitable trusts and foundations, corporates and individuals for their support of the Grand Atrium Project:



radionetwork®



Museum Circle, an independent charitable trust supporting Auckland Museum.



- Chisholm Whitney Family Trust
- Friedlander Trust
- Gibbs Family
- Levene Family
- McConnell Family
- Pelorus Trust
- Peter and Joanna Masfen
- Sainsbury Family
- Sir John Logan Campbell Residuary Estate
- Smith & Caughey Limited
- South Auckland Charitable Trust
- Thermosash Commercial Limited
- Woolf Fisher Trust
- Donors to the 'With a View to the Future' campaign
- Donors to the 'Take your seat for the 21st Century' campaign



Auckland Museum wishes to thank EQC for its sponsorship of the *Volcanoes* exhibition.

Auckland Museum wishes to thank the following exhibition sponsors; Beca Group, Emissary Ltd, Mainfreight Ltd, National Geographic Channel, Sony NZ Ltd, Te Puni Kokiri.

# LOCAL AUTHORITIES

The following local authorities meet the net operating costs of maintaining, operating and developing the Museum.



The Museum Trust Board is grateful for the support and advice provided by the members of the Electoral College who approve the annual Museum Levy.