

TĀMAKI PAENGA HIRA SUSTAINABILITY ACTION PLAN

FY 2021/2022 - 2023/2024



Tāmaki
Paenga Hira
Auckland
War Memorial
Museum



Tuia ki te rangi
Tuia ki te whenua
Tuia ki te moana
Tuia te here tangata
Ka rongo te Pō,
Ka rongo te Ao.

**Bind the tapestry of life which
affirms humanity's connection to
the natural world. To the celestial
realm, to the early realm, to
water for sustenance for all life
forms, and to remember to keep
everything in balance.**

Cover image: Pihipihi, *Zosterops laterali* (Silvereye). Tāmaki Paenga Hira Auckland War Memorial Museum. LB1544.

Left image: Pūpū Tarakihi, *Argonauta nodosa* (Paper nautilus). Tāmaki Paenga Hira Auckland War Memorial Museum. Ma120830.



CONTENTS

A message from the Chair and Chief Executive

Our three-year sustainability action plan

Our pou

Our people

Our place

Our communities

Our mahi

Governance & review

Our international context

Our national & local context

A few of our past achievements

Glossary

Image: Kea, *Nestor notabilis* (Mountain parrot). Tāmaki Paenga Hira Auckland War Memorial Museum. LB4352.

A MESSAGE FROM THE CHAIR AND CHIEF EXECUTIVE

Nau Mai, Haere Mai

There are few, if any, cultural organisations in the world today that would argue with the need to make sustainability a top priority. Protection and management of our cultural and natural heritage have never been more important. Museums are all about perpetuity, for today, for tomorrow and for the long term. For almost 170 years, Tāmaki Paenga Hira Auckland War Memorial Museum has been part of the fabric of Tāmaki Makaurau Auckland and Aotearoa New Zealand. To ensure we are a relevant and vibrant museum for today and the future, it is important that we play our part in New Zealand’s environmental, social and economic sustainability. We must create a sustainable Museum, fit for the future.

The period 2020 to 2030 has been set out as a decade of action: global action, local action and people’s action. As a civic anchor institution highly trusted by the community, Tāmaki Paenga Hira Auckland Museum is very well placed to support all three of these goals.

Our Sustainability Action Plan is aligned with the United Nations’ Sustainable Development Goals (SDGs), the ‘blueprint’ to create a better and more sustainable future for all. Museums are ideally placed to support many SDG targets, notably those aimed at protecting and safeguarding cultural and natural heritage, providing education for sustainable development, and supporting research and cultural participation.

The International Council of Museums (ICOM) sees museums as spaces for dialogue, learning and training, with an important role in education, social cohesion, and sustainable development. We are uniquely positioned to help raise public awareness of the value of cultural and natural heritage and our shared responsibility to contribute to their care. We also support economic development, preservation and protection of heritage, the protection and promotion of cultural

diversity, the generation and sharing of scientific knowledge, the stimulation of lifelong learning and social cohesion, and the development of the creative industries and tourism economy.

And at home, Auckland Council has declared a climate emergency. Tāmaki Paenga Hira Auckland Museum is in a unique position to support the sustainability ambitions of the city, outlined in the Auckland Plan 2050 and Te Tāruke-ā-Tāwhiri: Auckland’s Climate Plan. We recognise the unique role the Museum has to play, both in how it operates as a public museum and destination attraction and notably in its role educating those who live here and visitors to our city. Our goal is for Tāmaki Paenga Hira Auckland Museum to contribute to the city’s sustainability and to build cohesive and sustainable communities.

As a kaitiaki (guardian) in this city, we aim to contribute to a greener Tāmaki Makaurau Auckland. We will strive to reduce the Museum’s environmental impact and optimise our resources and are committed to continuously improving our performance through membership of Toitū Envirocare, the Sustainable Business Council and other industry bodies. Our Plan will reduce Scope 1, 2 and 3 emissions by 60% by 2030, with a targeted goal of achieving net zero by 2050* and embeds sustainable decision-making and practices across all aspects of Museum activity, working closely with our people, partners and sector, to share knowledge and skills.

Increasingly, museums have a key role in building social cohesion and community capital. Guided by the principles of kaitiakitanga (guardianship), our responsibilities for care and protection go beyond the collections we are entrusted with and include the future of the environments from which these collections originated. Aligned with the principles of manaakitanga (nurturing relationships), we will deploy our

collections, public programming and research capability to better understand the impacts of climate change on biodiversity and our daily lives. The traditional museum mode of simply presenting the facts is no longer enough.

Through our visitor experience and public programmes, we aim to inspire and enable people to take action that sustains and enhances both the environment and community’s well-being. Our Plan bridges the gap between public policy and the tools that empower individuals and communities to work towards a positive climate future.

Our Action Plan takes a three-year view. We are committed to the development and implementation of an annual plan of activity that will move us closer to our ambitions for the sustainability of the Museum and the communities we serve.



Professor Richard Bedford
CNZM, QSO, FRSNZ
Chair
Auckland Museum Trust Board



Dr David Gaimster
Chief Executive
Tāmaki Paenga Hira
Auckland War Memorial Museum

* Scope 1 emissions: Direct greenhouse gas emissions from sources we control or own, such as fuel combustion, company vehicles and electricity. Scope 2 emissions: Indirect emissions from the generation of purchased electricity, heating and cooling consumed. Scope 3 emissions: Indirect emissions that occur from our value chain and downstream emissions from activities that we do not control, such as purchased goods and services, business travel, employee commuting, waste disposal, transportation and distribution.

Images: Lichen. *Sticta latifrons*. Tāmaki Paenga Hira Auckland War Memorial Museum. AK186159 and AK132632.

OUR THREE-YEAR SUSTAINABILITY ACTION PLAN

As a leading encyclopedic collecting institution with responsibility for natural and cultural heritage, Tāmaki Paenga Hira Auckland Museum has a duty to educate, inspire and act on environmental sustainability. This is central to the Museum's purpose and ensures our cultural and natural heritage are preserved for generations to come.

However, preserving the past, educating the present and shaping the future come at an obvious cost. Museums consume huge amounts of energy. Climate controls, gallery lighting, digital systems and security systems are just some of the requirements of a modern public museum operation. Each has considerable environmental impacts. To us, sustainability means being accountable for our impact as a business. And we're committed to reviewing our infrastructure, energy usage, waste management and much more, to reduce their negative impacts.

We do this by continually improving our performance through our people, processes and management systems. Here we have an opportunity to inform and influence policy and practice in our professional sector and inform and enable individuals and communities to build a more sustainable future.

This is a three-year plan, setting the foundation for our long-term net-zero target by 2050. Our three-year Sustainability Action Plan focuses our attention on the areas we can influence and on which we can have the most significant positive impact. This reinforces our organisation-wide commitment to reduce our impact on the environment and inspire others to do the same.

The 17 SDGs are integrated, recognising that action in one area will affect outcomes in others. Development must balance economic, social and environmental sustainability. Tāmaki Paenga Hira Auckland Museum is uniquely placed to contribute to these goals.

OUR SUSTAINABILITY FRAMEWORK FOCUSES SPECIFICALLY ON SEVEN SDG.

<div>4</div> <div>QUALITY EDUCATION</div> <div></div>	<div>8</div> <div>DECENT WORK AND ECONOMIC GROWTH</div> <div></div>	<div>11</div> <div>SUSTAINABLE CITIES AND COMMUNITIES</div> <div></div>
<div>12</div> <div>RESPONSIBLE CONSUMPTION AND PRODUCTION</div> <div></div>	<div>13</div> <div>CLIMATE ACTION</div> <div></div>	<div>14</div> <div>LIFE BELOW WATER</div> <div></div>
<div>15</div> <div>LIFE ON LAND</div> <div></div>		



HOW MUSEUMS CONTRIBUTE TO THE SDGS

Equally, our plan references Tāmaki Paenga Hira Auckland Museum’s contributions to the SDGs as part of a global community of museums. The International Council of Museums (ICOM) identifies the protection and promotion of cultural and natural diversity as major challenges of the 21st century. In this respect, museums and collections provide the primary means by which tangible and intangible testimonies of nature and human cultures are safeguarded and accessed. As spaces for cultural transmission, intercultural dialogue, learning, discussion and training, museums also play an important role in education (formal, informal, and lifelong learning), social cohesion, and sustainable development.

Museums are partners in sustainable development through the preservation and protection of heritage, the protection and promotion of cultural diversity, the transmission of scientific knowledge, the development of educational policy, lifelong learning and social cohesion, and the development of the creative industries and the tourism economy.

1	Protect and safeguard the world’s cultural and natural heritage, both within museums and more generally
2	Support and provide learning opportunities in support of the SDGs
3	Enable cultural participation for all
4	Support sustainable tourism
5	Enable research in support of the SDGs
6	Direct internal leadership, management and operations to support the SDGs
7	Direct external leadership, collaboration and partnerships towards the SDGs

ENVELOPED BY THE MUSEUM’S GUIDING PRINCIPLES OF KAITIAKITANGA AND MANAAKITANGA, OUR SUSTAINABILITY ACTION PLAN IS GROUNDED BY FOUR POU (PILLARS):

Our People, Our Communities, Our Place, Our Mahi

OUR SUSTAINABILITY ACTION PLAN WILL DELIVER ON FIVE KEY OUTCOMES.

- **Outcome 1:** Reduce the environmental impacts of how we deliver our services and operate our building
- **Outcome 2:** Protect and promote indigenous culture and natural heritage
- **Outcome 3:** Provide environmental and sustainability education for our communities
- **Outcome 4:** Operate with highly engaged staff and volunteers who champion sustainability initiatives
- **Outcome 5:** Reflect an integrated achievement of economic, environmental and social goals of development through taking a holistic view of sustainability

KEY AREAS OF IMPACT FY 2021/2022 - FY 2023/2024

- By the conclusion of FY 2023/2024 we will have:
- Established an Energy Management Plan to reduce and/or offset Scope 1 and Scope 2 greenhouse gas emissions by 60% by 2030
 - Identified a pathway to reduce greenhouse gas emissions to net zero by 2050
 - Created a model for sustainable gallery renewal to use as a blueprint for future capital projects
 - Opened our Natural Environment and Human Impact galleries to the public
 - Delivered learning activities and public programmes that critically address and build understanding around local and global issues of climate change
 - Contributed to Aotearoa New Zealand’s national knowledge base of biodiversity and the impact of climate change

OUR SUSTAINABILITY FRAMEWORK

FY 2021/2022 - FY 2023/2024

Manaakitanga



Kaitiakitanga

INTERNATIONAL CONTEXT		NATIONAL CONTEXT		LOCAL CONTEXT	
The Paris Agreement	United Nations' 17 Sustainable Development Goals (SDGs)	Zero Carbon Bill	The Auckland Plan 2050	Te Tāruke-ā-Tāwhiri: Auckland's Climate Plan	

OUR PEOPLE

We will work with our staff and volunteers to better understand and quantify the carbon impact of our work, and to develop and adopt more sustainable ways of working. By creating a strong culture of sustainability, we will raise and maintain awareness and provide the necessary resources and training to deliver long-lasting change. Our Green Team members are the cross-organisational green champions from within our Museum whānau (family) who will help share and promote best practices and information. We will inspire and engage our people to act for sustainability by encouraging active participation, at work and home.

8

DECENT WORK
AND ECONOMIC
GROWTH

11

SUSTAINABLE
CITIES AND
COMMUNITIES

6

Direct internal leadership, management and operations to support the SDGs



OUR ASPIRATION	GOALS	OUTCOME
Inspire and engage our people, to act as sustainability champions by embedding sustainable decision-making and practices and sharing knowledge and skills	Establish a cross-functional pan-Museum Green Team to be the sustainability champions for the Museum and drive environmental initiatives that engage our people	Operate with a highly engaged staff and volunteers who champion sustainability initiatives
	Set up a Green Team Steering Group to review and monitor progress quarterly	
	Develop an annual internal engagement and communications strategy that shares the Museum's sustainability goals, annual initiatives, and progress towards achieving these	
	Incorporate sustainability objectives into the performance objectives of Green Team members with specific responsibility for leading the delivery of identified annual projects	
	Establish an employer-supported volunteering scheme which supports staff to engage in environmental volunteering in the Auckland region	
Be an employer of choice that builds a sustainable workforce and feeds the pipeline of those who work in the sector	Provide opportunities for our people to learn more about sustainability and enable them to be aware of changing sustainability thinking	Reflect an integrated achievement of economic, environmental and social goals of development through taking a holistic approach to sustainability
	Ensure a Diversity and Inclusion Strategy and Action Plan is in place and achieves outcomes to promote an accessible and inclusive Museum	
	Offer full and productive employment and decent pay and work for all our people	
	Provide a healthy and safe workplace and deliver a comprehensive wellness and employee support programme	



OUR PLACE

We have an active commitment to reducing our environmental footprint and the impact of how we deliver our activities and operate our buildings.

We will reduce the negative environmental impact of how we deliver our activities and operate our buildings, targeting a 60% reduction for Scope 1 and 2 emissions by 2030, and net zero by 2050. We will substantially reduce waste generation through prevention, reduction, recycling and reuse. We will adopt sustainable travel, business and building practices. As we look ahead to a staged renewal of galleries, we will future-proof the infrastructure that supports our collections and visitor experience.

12

RESPONSIBLE CONSUMPTION AND PRODUCTION

13

CLIMATE ACTION

1

Protect and safeguard the world’s cultural and natural heritage, both within museums and more generally

OUR ASPIRATION	GOALS	OUTCOME
Reduce our Scope 1 and Scope 2 carbon emissions by 60% by 2030	Maintain our Toitū certification by working with the Toitū Envirocare environmental management system to monitor, record and communicate our environmental performance as we actively work to measure and manage our carbon footprint	Reduce the environmental impacts of how we deliver our services and operate our building
	Develop an Energy Management Plan for the Museum, identifying the most cost-efficient methods to reduce and/or offset Scope 1 and Scope 2 greenhouse gas emissions, identify priorities for investment and deliver initiatives annually to continually manage and reduce our emissions	
	Identify the pathway forward to achieve net zero by 2050	
Reduce Scope 3 emissions by 2030 through a focus on transportation	Develop a Staff Travel Plan which shifts the mode of staff travel from baseline in 2017 to a less carbon-intensive method	
	Reduce the Scope 3 transport emissions from visitors through advocacy for and promotion of less carbon – intensive methods	
	Review and reduce the emissions from work-related delivery services and travel, e.g. local, national and international	
Reduce Scope 3 emissions by reducing waste generation and implementing a culture of reduce, reuse, recycle	Undertake an annual waste audit to inform actions to understand how Museum waste is generated and disposed of to identify initiatives to reduce, reuse and recycle.	
	Deliver reduce, reuse, recycle initiatives to decrease total waste sent to landfill year-on-year	
	Reduce the use of single-use plastics at the Museum by 50%	

OUR ASPIRATION	GOALS	OUTCOME
Reduce Scope 3 emissions by reducing waste generation and implementing a culture of reduce, reuse, recycle (continued)	Establish a regional network of galleries, libraries, archives and museums (GLAM) institutions that participate in a resource reuse programme	Reduce the environmental impacts of how we deliver our services and operate our building
	Work with our onsite catering and hospitality business partners to understand and improve sustainability performance	
Efficiently manage water consumption	Understand our water usage and investigate options for reuse and reduction	
Embed a more sustainable model and practice of exhibition development and gallery renewal	Establish and implement sustainable design guidelines and practices for gallery and exhibition development	Reduce the environmental impacts of how we deliver our services and operate our building
	Produce and implement sustainable design guidelines and practices for gallery renewals that incorporate sustainability principles to minimise building, maintenance, environmental and social impacts	
	Build meaningful sustainability criteria into gallery renewal specifications, briefs and tenders. Evaluation to include sustainability weighting as part of value and monitoring of sustainability requirements undertaken	
	Establish evidence-based recommendations for optimal rotation of collections	
	Participate in the development of virtual courier and installation practices in collaboration with exhibition providers and lenders	
	Extend the life of galleries by making provision to refresh the gallery regularly, thereby extending its useful life	



OUR COMMUNITIES

As institutions of education, museums provide inclusive quality education and promote lifelong learning opportunities for all. As a trusted civic leader and source of information, Tāmaki Paenga Hira Auckland Museum will promote public awareness about the effects of climate change and the need for action to achieve environmental sustainability. We embrace our role in promoting awareness and conservation of the cultural and natural heritage through our exhibitions, education and activities.

The period 2020 to 2030 has been set out as a decade of action: global action, local action and people’s action. Museums have always played an important role in creating spaces for people to debate, learn and share ideas. We will engage our public to ensure they understand how they can best contribute at a personal level and become agents of change.

Everyone has the right to freely participate in the cultural life of the community. Tāmaki Paenga Hira will continue to provide free general admission for all Aucklanders to enable cultural participation. We provide an open and permissive approach to our online audiences globally. Tāmaki Paenga Hira is a safe, inclusive and accessible public space that contributes to building strong, socially cohesive and sustainable communities in Tāmaki Makaurau Auckland, strengthening civic engagement and community participation.



4
QUALITY
EDUCATION

11
SUSTAINABLE
CITIES AND
COMMUNITIES

13
CLIMATE
ACTION

2

Support and provide learning opportunities in support of the SDGs

3

Enable cultural participation for all

OUR ASPIRATION	GOALS	OUTCOME
Engage with our public about the effects of climate change through exhibitions, public programmes and education, focusing on the need for positive action to achieve environmental sustainability	Raise awareness of the human impact on the natural environment through the development of the new Natural Environment and Human Impacts galleries in 2024, ensuring that mātauranga Māori is embedded into their research, development and delivery	Provide environmental and sustainability education for our communities
	Develop and deliver education programmes for formal learners that raise awareness of human impact on the natural environment and climate change, and provide ways for people to become agents of change	
	Establish and deliver an annual schedule of public programmes that are focused on sustainability and climate change; share successful initiatives which reduce or mitigate negative environmental change and biodiversity loss or which disseminate research, focusing on the need for positive action to achieve environmental sustainability	
	Develop an external communications strategy that shares the Museum’s sustainability story to raise awareness and empower people to act as agents of change	
Be a key contributor to helping to build strong cohesive and sustainable communities in Tāmaki Makaurau Auckland	Provide universal access to safe, inclusive and accessible public spaces throughout the Museum’s site	Reflect an integrated achievement of economic, environmental, and social goals of development through taking a holistic approach to sustainability
	Continue to provide free general admission onsite to Aucklanders to enable cultural participation for all	
	Continue to promote online access to collections which is open by default, to enable cultural participation for all	
	Work with diverse Tāmaki Makaurau Auckland communities to develop compelling and participatory public experiences for audiences onsite, offsite and online	
	Deliver an inclusive, rewarding and vibrant volunteering programme that provides opportunities for civic participation and community belonging	

OUR MAHI

Sustainability is at the heart of the work museums undertake.

Museums have a key role in protecting and safeguarding the world's cultural and natural heritage. We are a repository for tangible cultural heritage such as our iconic Grade 3 heritage building and the taonga and collections for which we are a kaitiaki, and intangible cultural heritage such as the knowledge behind them. Our collections provide a rich resource for creating knowledge and understanding.

We contribute to the protection of our natural heritage through our natural science collections which represent almost 170 years of collecting, providing invaluable data sources for measuring biodiversity change over time. In partnership with others, we undertake scientific fieldwork to provide rich evidence-based research into environmental change and biodiversity loss. Through our research, we document how and why biodiversity has changed over time due to natural and human-induced changes. This understanding will help us develop solutions to protect the unique biodiversity of New Zealand into the future. Mātauranga Māori is an important component of this research, focusing on interweaving a cultural dimension with our natural history collections and combining scientific knowledge with indigenous practices and systems.

Our research builds a base of evidence that informs the understanding of climate change and biodiversity.

Auckland Museum has a critical role to play in collecting the evidence required to influence changing cultural perspectives so that environments and landscapes can be protected and restored. Our research contributes to better understanding human impact on the environment in Tāmaki Makaurau Auckland, Aotearoa New Zealand, and worldwide, and can gather and communicate evidence of successful initiatives which reduce harm and loss in the environment.

Our role as a kaitiaki in caring for collections contributes to the protection and safeguarding of cultural and natural heritage in the wider world. We will ever-increasingly seek more sustainable

ways of caring for and storing collections. Visible demonstration of the Museum's interest in, and commitment to, indigenous knowledge systems, environmental research and digital reach and education enhances Auckland's reputation as a connected and globally aware city.

As the first museum in Aotearoa to sign up to the New Zealand Tourism Sustainability Commitment, we will play our part to ensure economic, environmental and social sustainability as part of the tourism industry. As an active ambassador of the Tiaki Promise, we are committed to caring for New Zealand now, and for future generations to act as a guardian, protecting and preserving our home.

We will ensure our procurement practices and policies are sustainable. And we are committed to sharing our learnings with the sustainability community.

11

SUSTAINABLE CITIES AND COMMUNITIES



12

RESPONSIBLE CONSUMPTION AND PRODUCTION



13

CLIMATE ACTION



14

LIFE BELOW WATER



15

LIFE ON LAND



1

Protect and safeguard the world's cultural and natural heritage, both within museums and more generally

4

Support sustainable tourism

5

Enable research in support of the SDGs

7

Direct external leadership, collaboration and partnerships towards the SDGs

22 True jellyfish. *Cnidaria Scyphozoa*. Tāmaki Paenga Hira Auckland War Memorial Museum. Ma656268.

23

OUR ASPIRATION	GOALS	OUTCOME
Undertake and disseminate research that informs the body of knowledge related to environmental change and biodiversity loss	<p>Biodiversity is a core theme of the Museum’s Research Strategy and we will:</p> <ul style="list-style-type: none">• Document flora and fauna, incorporating mātauranga Māori, within the Auckland region, the upper North Island, and the regional south-west Pacific area, to understand taxonomic relationships and changing biodiversity (including naturalisations and invasions) and to forecast consequences of future changes• Establish new partnerships within the regional Pacific to expand the understanding and protection of the natural heritage of these regions• Develop research-based conservation initiatives and tools to sustain and restore Auckland’s environments, ecologies and endemic species, focusing on contemporary pressures and issues facing the environment• Undertake biological surveys incorporating public engagement and iwi partnerships to establish baseline information that provides a reference point to monitor environmental and human-induced changes or to build on past surveys to document rates of change• Take a leading role in research into taxonomy and biosystematics in Aotearoa New Zealand, producing guides in areas of taxonomic expertise for Aotearoa New Zealand and the regional Pacific	Protect and promote indigenous culture and natural heritage
	<p>Human impact is a core theme of the Museum’s Research Strategy, and we will:</p> <ul style="list-style-type: none">• Foster inter-disciplinary research to accurately assess contributors towards the Anthropocene (the current geological age), including human impacts on our people, communities, environments, species distributions and biodiversity• Investigate the impacts on our region of macro-influences such as invasive species and diseases• Research the impacts of human-induced change on Auckland’s environments, ecologies, landscapes and communities, focusing on immediate environmental pressures such as urban expansion as well as the influences of climate change, global warming and sea-level rise• Develop research outreach programmes focused on achieving significant positive conservation outcomes for endangered species in Aotearoa New Zealand	

OUR ASPIRATION	GOALS	OUTCOME
Ensure that the Museum’s cultural and natural heritage are cared for, developed and preserved for future generations	<p>Review conservation and collections management processes and policies and lead the sector in the adoption of sustainable collections care and conservation practices with respect to climate control, pest management and transportation</p>	Reduce the environmental impacts of how we deliver our services and operate our building
	<p>Analyse and balance the costs of energy and resource consumption incurred through providing digital storage and delivery against the benefits of enhanced access and knowledge gained by communities regardless of location</p>	
Contribute to sustainable tourism that creates jobs and promotes local culture and products	<p>Maintain the Museum’s Gold Sustainable Tourism Accreditation, leading the way in making Aotearoa New Zealand a world-class sustainable visitor destination</p>	Reflect an integrated achievement of economic, environmental and social goals of development through taking a holistic approach to sustainability
	<p>Promote responsible, sustainable and universally accessible tourism practices through the integration of the Tiaki Promise into the Museum’s tourism offering, educating international and domestic visitors about how to travel responsibly in Aotearoa New Zealand</p>	
Embed sustainable policy and practices in financial procurement, investment and fundraising	<p>Develop a sustainable procurement framework to guide purchasing decisions across the Museum</p>	
	<p>Ensure all new and renewed tenders and contracts have environmental sustainability weightings of 15% as a minimum</p>	
	<p>Make the Museum’s capital is ethically invested by applying environmental sustainability criteria to funding and investment decisions as well as aiming for maximum financial return</p>	
Be an active and contributing member of the sustainability community	<p>Ensure the Museum’s fundraising policy aligns with our sustainability aspirations</p>	
	<p>Review the tools available for reporting on sustainability, and assess and adopt the measurement tool most suitable for the Museum to measure our performance</p>	
	<p>Be an active and contributing member of the Sustainable Business Council and other relevant industry bodies</p>	
	<p>Share thought leadership in sustainability with the GLAM sector locally and nationally</p>	

HOW WE WILL OPERATIONALISE OUR SUSTAINABILITY ACTION PLAN

Each year, we will develop an annual plan of activity based on the goals in our Sustainability Action Plan to deliver our desired outcomes.

Sustainability Action Plan FY 2021/2022 - FY 2023/2024

OUR COMMUNITIES

OUR ASPIRATION	GOALS	OUTCOME
Engage with our public about the effects of climate change, through exhibitions, public programmes and education, focusing on the need for positive action to achieve environmental sustainability	Raise awareness of the human impact on the natural environment through the development of the new Natural Environment and Human Impacts galleries in 2024, ensuring that mātauranga Māori is embedded into its research, development and delivery	Provide environmental and sustainability education for our communities
	Develop and deliver education programmes for formal learners that raise awareness of human impact on the natural environment and climate change, and provide ways for people to become agents of change	
	Establish and deliver an annual schedule of public programmes that are focused on sustainability and climate change; share successful initiatives which reduce or mitigate negative environmental change and biodiversity loss; or which disseminate research, focusing on the need for positive action to achieve environmental sustainability	
Be a key contributor to helping to build strong, cohesive and sustainable communities in Tāmaki Makaurau Auckland	Develop an external communications strategy that shares the Museum's sustainability story to raise awareness and empower people to act as agents of change	Reflect an integrated achievement of economic, environmental and social goals of development through taking a holistic approach to sustainability
	Provide universal access to safe, inclusive and accessible public spaces	
	Continue to provide free general admission onsite to Aucklanders to enable cultural participation for all	
	Continue to promote online access to collections which is open by default, to enable cultural participation for all	
	Work with diverse Tāmaki Makaurau Auckland communities to develop compelling and participatory public experiences for audiences onsite, offsite and online	
	Deliver an inclusive, rewarding and vibrant volunteering programme that provides opportunities for civic participation and community belonging	

Annual Sustainability Action Plan FY 2021/22

OUR COMMUNITIES

Our Aspiration: Be a key contributor to helping to build strong, cohesive and sustainable communities in Tāmaki Makaurau

Outcome: Reflect an integrated achievement of economic, environmental and social goals of development through taking a holistic approach to sustainability

SUSTAINABILITY ACTION PLAN GOALS FY 2021/2022 - FY 2022/2023	ACTIVITIES FOR FY 2021/ 2022	PROJECT LEAD	TIMING	STATUS
Provide universal access to safe, inclusive and accessible public spaces	Deliver the FY 2021/2022 Diversity and Inclusion Plan	Director People and Organisation		In progress
	Work with Taipari whānau to provide disabled access to Hotunui	Tumuaki Director Māori and Pacific Development		In progress
Continue to provide free general admission to Aucklanders to enable cultural participation for all	Maintain free general admission for Aucklanders	Executive Team		Complete
Work with diverse Tāmaki Makaurau Auckland communities to develop compelling public experiences	Programme Te Taunga Community Hub as a community engagement space in the Museum for communities to occupy and engage with the Museum and the public in their own ways	Head of Learning and Public Programmes	Ongoing	In progress
	Work with the Pasifika community to input into the development of the Natural Environment and Human Impact galleries	Head of Exhibitions Project Manager	Ongoing	In progress
	Work with Māori to input into the development of the Natural Environment & Human Impact Gallery	Project Manager	Ongoing	In progress
	Work with local iwi with respect to the Watercare fossil project and work with partners to conduct public experiences for the local community	Head of Natural Sciences, Head of Learning and Public Programmes		In progress
Deliver an inclusive, rewarding and vibrant volunteering programme that provides opportunities for civic participation and community belonging	Develop and deliver an annual programme of volunteer activity and engagement	Volunteer Manager	June 2022	In progress

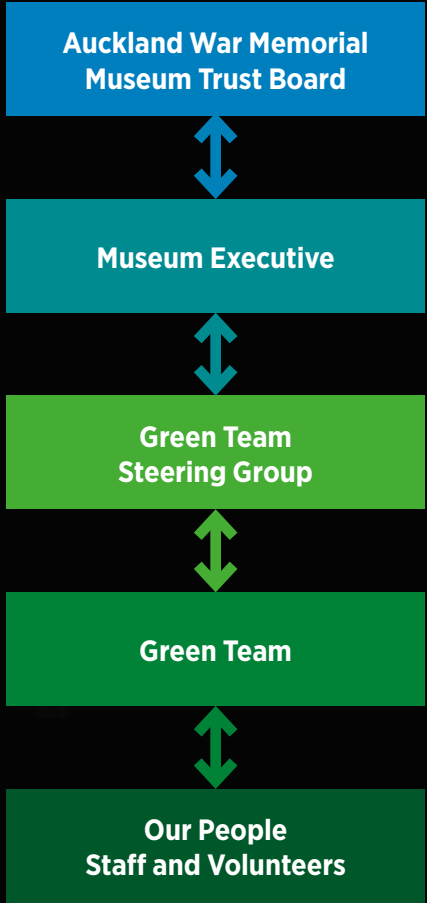
GOVERNANCE & REVIEW

It all starts with good governance. Our Trust Board, Executive and people are committed to optimising the ways the Museum can contribute to sustainability.

They do this by:

- Recognising Te Tiriti o Waitangi and respecting the obligations it places on all of us to be a kaitiaki
- Providing climate action education and advocacy
- Applying a sustainability lens across policy, processes, programmes and projects
- Promoting a strong culture of sustainability across all employees
- Undertaking research which informs thinking around biodiversity and climate change impact
- Maintaining the Museum's Toitū accreditation
- Backing our Green Team
- Sharing our sustainability achievements

We will take an open and honest approach to our sustainability journey, committing to continuous learning and improvement. Regular monitoring and reporting will ensure focus is maintained on its delivery.



The Auckland Museum Trust Board approves the three-year Sustainability Action Plan. Progress on its achievement is reported to the Trust Board annually.

The Museum Executive Team owns and resources the Sustainability Framework and supports the Green Team to enable the delivery of the annual Sustainability Action Plan.

The Green Team Steering Group is a small team that reviews the progress of the Sustainability Action Plan's activities against goals.

The Green Team is a cross-functional group of staff who are the champions of sustainability across the Museum. They work collaboratively, bringing in colleagues from across the organisation to lead and effect change.

Our people are agents of change.

OUR INTERNATIONAL CONTEXT

THE PARIS AGREEMENT

The Paris Agreement is a legally binding international treaty on climate change. It was adopted at the United Nations Climate Change Conference in Paris in December 2015. Its goal is to limit global warming well below 2 degrees Celsius, preferably to 1.5, compared to pre-industrial levels. The Agreement calls on signatories to accelerate and intensify the actions and investments needed to tackle climate change and adapt to its effects.

UNITED NATIONS’ 17 SUSTAINABLE DEVELOPMENT GOALS (SDGS)

In 2016, the United Nations’ 17 SDGs of the 2030 Agenda for Sustainable Development came into force.

The SDGs establish a call for action by all countries, to promote prosperity while protecting the planet. They recognise that ending poverty must go hand in hand with strategies that build economic growth and address social needs, including education, health, social protection, and job opportunities, while tackling climate change and environmental protection.

In developing the Museum’s Sustainability Action Plan, the SDGs act as the starting point for advancing sustainability targets for cultural heritage in a metropolitan setting.



OUR NATIONAL AND LOCAL CONTEXT

Central Government

Zero Carbon Bill

In December 2020, the Government declared a climate change emergency and committed to a carbon-neutral government by 2025, on a path to net-zero emissions by 2050.

The Climate Change Response (Zero-Carbon) Amendment Act provides a framework by which New Zealand can develop and implement clear and stable climate change policies.

It also provides a framework by which New Zealand can develop and implement clear and stable climate change policies that contribute to the global effort under the Paris Agreement.

The legislation makes New Zealand one of only a few countries to have a zero-emissions goal enshrined in law.

Local Government

The Auckland Plan 2050

The Auckland Plan 2050 is the city’s long-term spatial plan to ensure Tāmaki Makaurau Auckland grows in a way that will meet the opportunities and challenges of its future. It is required by legislation to contribute to Auckland’s social, economic, environmental and cultural well-being. Within the Auckland Plan, climate change is one of the three key challenges facing the city.

Te Tāruke-ā-Tāwhiri: Auckland’s Climate Plan

Auckland Council has also declared a climate emergency. Te Tāruke-ā-Tāwhiri: Auckland’s Climate Plan will help deliver the Auckland Plan 2050’s high-level vision on climate change.

The plan is founded on three key elements to drive climate action:

- An overarching Tāmaki response
- A focus on clear greenhouse gas emissions reduction targets
- Preparing Auckland for the impacts of climate change.

Te Tāruke-ā-Tāwhiri: Auckland’s Climate Plan identifies and delivers the specific actions that are particular to Auckland’s situation and needs. The plan sets out eight priorities for climate action.

Priorities:

- Natural environment – supporting healthy and connected Aucklanders
- Built environment – promoting healthy, low impact lifestyles
- Transport – a low carbon, safe transport system
- Economy – a resilient, low carbon economy
- Communities and coast – prepared for our changing climate
- Food – a local food system
- Te Puāwaitanga ō te Tātai – Māori communities are self-sustaining and prosperous
- Energy and industry – a clean energy system



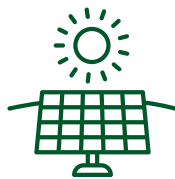
A FEW OF OUR PAST ACHIEVEMENTS

2010 - 2018

BY 2018, AUCKLAND MUSEUM WAS IN THE TOP 5 CEMARS® AND CARBONZERO™ CERTIFIED ORGANISATIONS NATIONALLY IN OUR CARBON-REDUCTION EFFORTS.

During that period, we achieved the following:

- Reduced our carbon footprint by 45%
- Reduced our electricity usage by 47%
- Reduced our consumption of natural gas by 55%
- Reduced our waste to landfill carbon emissions by 70%



189 SOLAR PANELS

were installed in 2014 on the Museum roof, making it one of the country's largest grid-connected photovoltaic installations. The amount of renewable energy generated by the panels (65,000 kWh per year) is equivalent to the power consumed by around eight average households.

THE NOISES MARINE RESTORATION PROJECT

The Museum is a partner in The Noises Marine Restoration Project, which aims to take a holistic approach to restore the mauri (life force) of the sea around The Noises islands in the Hauraki Gulf. To detect change through time, our curatorial team has led the development of an ecosystem monitoring plan to establish a baseline and will undertake regular surveys for the next 50 years to monitor change over time. This will enable assessment of the success of marine restoration and provide evidence to lead the adaptive management of the islands.

AOTEAROA NEW ZEALAND'S HUB FOR THE GLOBAL BIODIVERSITY HERITAGE LIBRARY

Tāmaki Paenga Hira Auckland Museum is part of a global consortium of institutions, headquartered at the Smithsonian Libraries in Washington DC that digitise and freely share their published and unpublished collections relating to biodiversity to support international scientific research. We digitise rare materials from our collections and those from other New Zealand research institutions, libraries and scientific societies. This fills a significant gap in online content about the endemic natural heritage of Aotearoa New Zealand, enabling the global research community to have free access to otherwise unavailable literature to increase the study of Aotearoa's unique flora and fauna.

1ST MUSEUM NATIONALLY TO SIGN THE NEW ZEALAND TOURISM SUSTAINABILITY COMMITMENT as part of the Tourism Industry of Aotearoa New Zealand (TIANZ). This commitment aims to ensure economic, environmental and social sustainability as part of the tourism industry.

ELECTRIC VEHICLE CHARGING STATIONS are available for visitors free of charge, courtesy of Vector. The service is part of the Museum's commitment to sustainability.

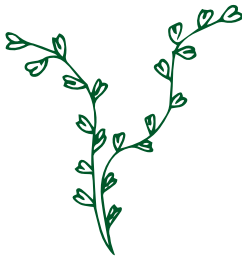


ELECTRIC VEHICLE

A bespoke electric van was purchased for transporting collection objects between the Museum and Manu Tāiko. This replaced the previous practice of renting a diesel-powered truck and has greatly reduced the carbon output of regular transport shuttles between the two sites.



SUPPORTING ACCESS TO PACIFIC BIODIVERSITY INFORMATION



The Museum has partnered with the University of the South Pacific in Suva to obtain a Global Biodiversity Information Facility (GBIF) grant. The University holds regionally important biodiversity collections from Fiji and adjacent Pacific islands. However, these are not readily available to an online audience, which has limited access to the depth of biodiversity information housed within these collections. The GBIF grant provides training for collection managers, identification workshops and a digitisation programme to improve the accuracy of the records and make the collections available to a global research audience.

TRAVEL PLAN. IN 2017 THE MUSEUM COMPLETED ITS FIRST TRAVEL PLAN SURVEY. This measured the transport modes used by staff to travel to and from the Museum and generated a range of initiatives for encouraging the switch to less carbon-intensive modes. In the 2018 Travel Plan survey, we saw that carpooling had increased from 9% to 13%, public transport usage from 21% to 25%, walking from 7% to 8%, cycling increased from 3% to 5%, and solo trips in private vehicles had decreased from 59% to 46%.

A WORLD FIRST. WORKING IN PARTNERSHIP WITH NGĀTIWAI. For the first time in global history, an indigenous group has been formally listed as the naming authority of a new species of animal. A new species of pygmy pipehorse, a fish closely related to the seahorse, has been named by kaumātua (elders) of Ngātiwai in collaboration with biodiversity scientists from Tāmaki Paenga Hira Auckland Museum and the California Academy of Sciences.



GOLD – THREE YEARS IN A ROW

Qualmark Gold Award
We're honoured to have been awarded a Qualmark Gold Award, for the third year running. This award is the highest honour bestowed by independent tourism assessors Qualmark, indicating Tāmaki Paenga Hira Auckland Museum as meeting the highest standards for tourism in New Zealand.

A Gold Award
recognises the best sustainable tourism businesses in New Zealand, with the delivery of exceptional customer experiences an integral part of everything they do. A Gold Sustainable Tourism Award identifies those businesses leading the way in making the New Zealand tourism industry a world-class sustainable visitor destination.

Qualmark COVID Clean Approved
We've recently received the Qualmark COVID Clean Approval. This approval is bestowed by independent tourism assessors Qualmark, indicating Tāmaki Paenga Hira Auckland Museum as implementing health and hygiene measures to help protect against COVID-19, in accordance with government guidelines.

TRAVELWISE CHOICES AWARDS



Supreme Award 2018 Winner – Auckland Museum
This award recognises the entry that, in the judge's opinion, was truly remarkable.



Flexi Award 2019 Auckland Museum
This award recognises the organisation with the best implementation of flexible working practices.



Sustainable Travel Champion Award 2019 Megan Harvey, Auckland Museum
This award recognises either the overall sustainable travel achievements in an organisation, or someone who 'walks the talk' or goes the extra mile to motivate others, organise events, or actively promote sustainable travel options.

GLOSSARY

- Kaitiakitanga** guardianship, stewardship
- Mahi** work, job, employment, practice, activity, operation, function
- Manaakitanga** the process of showing respect, generosity and care for others
- Mātauranga Māori** Māori knowledge – the body of knowledge originating from Māori ancestors, including the Māori world view and perspectives, Māori creativity and cultural practices
- Pou** a pillar or metaphoric post
- Taonga** a treasure, socially or culturally valuable objects, resources
- Tiaki** to care for people and place
- Scope 1 emissions:** Direct greenhouse gas emissions from sources we control or own, such as fuel combustion, company vehicles and electricity
- Scope 2 emissions:** Indirect emissions from the generation of purchased electricity, heating and cooling consumed
- Scope 3 emissions:** Indirect emissions that occur from our value chain and downstream emissions from activities that we do not control, such as purchased goods and services, business travel, employee commuting, waste disposal, transportation and distribution

